

**Sampling Survey Report
For Polychlorinated Biphenyls (PCBs)**

Hanover Elementary School

January 6, 2011

Meriden Public Schools

Meriden, CT

February 11, 2011



FUSS & O'NEILL

Disciplines to Deliver

Fuss & O'Neill EnviroScience, LLC

146 Hartford Road

Manchester, CT 06040



FUSS & O'NEILL
EnviroScience, LLC

Disciplines to Deliver

February 11, 2011

Michael Grove
Assistant Superintendent
Meriden Public Schools
22 Liberty Street
Meriden, CT 06450

RE: PCB Sampling Survey Report
Hanover Elementary School
208 Main Street, South Meriden, CT, CT
Fuss & O'Neill EnviroScience Project No. 20081473.A2E

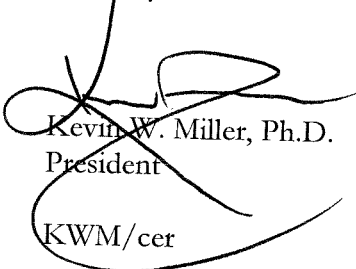
Dear Mr. Grove:

Enclosed is the report for the PCB sampling survey performed at Hanover Elementary School in South Meriden, Connecticut.

The survey is associated with a planned school expansion project. The expansion project connection corridor will impact the window system located in Room # 22. The survey was performed on January 6, 2011, by a Fuss & O'Neill EnviroScience, LLC. The survey included wipe sampling and air sampling.

If you have any questions regarding the contents of this report, please do not hesitate to contact me at (860) 646-2469, extension 5569. Thank you for this opportunity to have served your environmental needs.

Sincerely,



Kevin W. Miller, Ph.D.
President
KWM/cer

146 Hartford Road
Manchester, CT
06040

t (860) 646-2469
f (860) 533-5143

www.FandO.com

Connecticut
Massachusetts
New York
Rhode Island
South Carolina
Vermont

Table of Contents

PCB Sampling Survey Report Meriden Public Schools

1	Introduction.....	1
2	PCB Air and Wipe Sampling.....	1
2.1	PCB Wipe Sampling.....	1
2.2	Action Levels.....	2
2.3	PCB Air Sampling.....	2
2.4	Results.....	3
3	Conclusion.....	3

Appendices

End of Report

APPENDIX A - LABORATORY ANALYSIS AND CHAIN OF CUSTODY
AIR SAMPLE ANALYSIS

APPENDIX B - LABORATORY ANALYSIS AND CHAIN OF CUSTODY
WIPE SAMPLE ANALYSIS

1 Introduction

On December 15, 2010, Fuss & O'Neill EnviroScience, LLC (EnviroScience) Environmental Technician II, Scott Mossey, performed polychlorinated biphenyl (PCB) window caulk sampling associated with the Hanover Elementary School expansion project located in South Meriden Connecticut. This sampling was part of standard procedures for renovation of school buildings. Previous inspections were performed for asbestos; however, this is the first inspection performed to determine if PCBs are present within the window system's caulking.

As a result of the initial PCB source material sampling, PCBs in excess of 50 mg/Kg (parts-per-million) were identified on the exterior caulk window caulk, and greater than 1.0 mg/Kg (parts-per-million) on the interior window caulk. Therefore, the exterior material is determined to be bulk product waste and regulated under the Environmental Protection Agency's (EPA) Toxic Substances Control Act (TSCA) and the interior material is subject to Connecticut State Water Pollution Control Regulations (22a-463 through 22a-469). Both of these regulations cover the disposal of PCB containing waste. These regulations state that PCBs or any item, product or material containing PCBs (including caulk and brick containing PCBs) shall be disposed of in accordance with state and federal regulations.

On January 6, 2011, Fuss & O'Neill EnviroScience Environmental Consultants, Eduardo Miguel Marques, Ulkens Auguste, and Scott Mossey, performed supplemental testing required for the development of plans for submission to EPA prior to renovation. In addition, PCB air and wipe sampling was performed. This effort was made pursuant to the identification of regulated PCB-containing materials present outside the school building and the planned schedule for work, which presently dictates overall completion of all renovation work including PCB work not before June of 2011.

2 PCB Air and Wipe Sampling

Meriden Public Schools is planning an expansion project at Hanover Elementary School in Meriden, Connecticut. The connection corridor will impact the window system located in Room # 22. As a result of a planned renovation at the site, EnviroScience tested caulking and glazing compounds associated with window system at the school building for the presence of PCBs. The exterior window caulking was determined to contain PCBs at regulated concentrations in accordance with EPA's TSCA regulation 40 CFR Part 761.

EPA suggested that indoor air and wipe samples be collected within the school building. This was made pursuant to the identification of regulated PCB-containing materials present outside the school building and the planned schedule for work, which presently dictates overall completion of all renovation work (including PCB work) not before June of 2011. As such, the Meriden Public Schools chose to do air sampling and wipe samplings to ensure the safety of students and staff where PCBs are known to be present inside the school building.

2.1 PCB Wipe Sampling

Wipe samples were collected in accordance with 40 CFR §761Sub-Part P. Sufficient sample sizes were collected to ensure a detection limit that allows quantification of the data relative to

the EPA action concentration of 10 $\mu\text{g}/100\text{ cm}^2$ ($0.1\ \mu\text{g}/\text{cm}^2$). PCB homolog analysis was performed on these samples.

Eleven (11) samples were collected from representative classrooms and offices. Samples were collected from window sill, floor, horizontal surfaces, and food preparatory counter. After sampling, the samples were sealed in 4 oz. glass jars properly labeled with chain of custody filled out and sent to Contest Analytical Laboratory in East Longmeadow, MA for analysis by a modified EPA method 8270C.

2.2 Action Levels

The goal of this sampling protocol was to ensure that the PCB concentrations present in the materials do not present a significant health risk to the students and faculty in the school by comparing detected PCB concentrations to EPA's advisory concentration limits.

2.3 PCB Air Sampling

Air samples were collected in accordance with EPA Method TO-10A. Sufficient sample volume was collected to ensure a detection limit that allowed quantification of the data relative to the EPA advisory concentration of 300 ng/m^3 for elementary aged children and 450 ng/m^3 for faculty and staff at age 19 plus years (adults) in schools. PCB homolog analysis (modified 8270C) was performed on these samples.

Samples were collected from representative classrooms and offices. The samples were collected, properly labeled and chain of custody filled out, and sent to Contest Analytical Laboratory in East Longmeadow, MA for analysis by EPA Method TO-10A.

Table 1: Air and Wipe Sample Results for Sampled Locations

Location	Component	Material	Analysis Method - Parameter	Results - Total PCBs	Units
Room 25	-	Air	PCB Homologues	ND	$\mu\text{g}/\text{m}^3$
Room 25	Floor	Wipe	PCB Homologues	0.026	$\mu\text{g}/100\text{cm}^2$
Room 29	-	Air	PCB Homologues	ND	$\mu\text{g}/\text{m}^3$
Room 29	Floor	Wipe	PCB Homologues	0.032	$\mu\text{g}/100\text{cm}^2$
Kitchen	-	Air	PCB Homologues	ND	$\mu\text{g}/\text{m}^3$
Kitchen	Food Prep	Wipe	PCB Homologues	ND	$\mu\text{g}/100\text{cm}^2$
Cafeteria	-	Air	PCB Homologues	ND	$\mu\text{g}/\text{m}^3$
Cafeteria	Table	Wipe	PCB Homologues	ND	$\mu\text{g}/100\text{cm}^2$
Room 18	-	Air	PCB Homologues	ND	$\mu\text{g}/\text{m}^3$
Room 18	Desk	Wipe	PCB Homologues	ND	$\mu\text{g}/100\text{cm}^2$
Health Sp.	-	Air	PCB Homologues	ND	$\mu\text{g}/\text{m}^3$
Health Sp.	Sill	Wipe	PCB Homologues	ND	$\mu\text{g}/100\text{cm}^2$
Room 11A	-	Air	PCB Homologues	ND	$\mu\text{g}/\text{m}^3$
Room 11A	Floor	Wipe	PCB Homologues	0.015	$\mu\text{g}/100\text{cm}^2$
Room 12	-	Air	PCB Homologues	ND	$\mu\text{g}/\text{m}^3$
Room 12	Floor	Wipe	PCB Homologues	ND	$\mu\text{g}/100\text{cm}^2$
Room 1	-	Air	PCB Homologues	ND	$\mu\text{g}/\text{m}^3$
Room 1	Desk	Wipe	PCB Homologues	ND	$\mu\text{g}/100\text{cm}^2$
Room 22	-	Air	PCB Homologues	ND	$\mu\text{g}/\text{m}^3$

Location	Component	Material	Analysis Method - Parameter	Results - Total PCBs	Units
Room 22	Sill	Wipe	PCB Homologues	0.0049	µg/100cm ²
Room 22	Sill	Wipe	PCB Homologues	ND	µg/100cm ²

2.4 Results

The results of the air and wipe sampling have been summarized in the Table 1 on the next page. The laboratory data for the air and wipe sampling are included in *Appendix A and B*. All air samples were non detect and below the regulatory criteria of 300 ng/m³ in air for elementary aged children and 450 ng/m³ in air for faculty and staff at age of 19 plus years (adults) in schools. Wipe results, all samples were below the regulatory requirement of less than 10 µg/100 cm² for contact surfaces.

3 Conclusion

Based on the air and wipe sample results, in accordance with EPA advisory concentrations, none of collected samples exceeded EPA's criteria. In fact, all of the sample results had PCB concentrations well below (two orders of magnitude) the limits set by the EPA. As a result of the sampling initiated by Meriden Public Schools, EnviroScience concludes that the areas sampled at Hanover Elementary School are safe for students and teachers/adults.

Report prepared by EnviroScience Senior Scientist, Craig A. Calvert, Ph.D., C-CHO.

Reviewed by:



Kevin W. Miller, Ph.D.
President

Appendix A

Laboratory Analysis and Chain of Custody: Air Sample Analysis



39 Spruce Street * East Longmeadow, MA 01028 * FAX 413/525-6405 * TEL. 413/525-2332

January 25, 2011

Kevin Miller
Fuss & O'Neill EnviroScience, LLC - CT
146 Hartford Road
Manchester, CT 06040

Project Location: Hanover School-Meriden
Client Job Number:
Project Number: 20081473.A1E
Laboratory Work Order Number: 11A0156

Enclosed are results of analyses for samples received by the laboratory on January 7, 2011. If you have any questions concerning this report, please feel free to contact me.

Sincerely,

A handwritten signature in black ink that reads "Holly L. Folsom". The signature is written in a cursive style with a large, prominent initial "H".

Holly L. Folsom
Project Manager



39 Spruce Street * East Longmeadow, MA 01028 * FAX 413/525-6405 * TEL. 413/525-2332

Fuss & O'Neill EnviroScience, LLC - CT
146 Hartford Road
Manchester, CT 06040
ATTN: Kevin Miller

REPORT DATE: 1/25/2011

PURCHASE ORDER NUMBER:

PROJECT NUMBER: 20081473.A1E

ANALYTICAL SUMMARY

WORK ORDER NUMBER: 11A0156

The results of analyses performed on the following samples submitted to the CON-TEST Analytical Laboratory are found in this report.

PROJECT LOCATION: Hanover School-Meriden

FIELD SAMPLE #	LAB ID:	MATRIX	SAMPLE DESCRIPTION	TEST	SUB LAB
0106UA-01A	11A0156-01	Air		TO-10A/EPA 680 Modified	



39 Spruce Street * East Longmeadow, MA 01028 * FAX 413/525-6405 * TEL. 413/525-2332

CASE NARRATIVE SUMMARY

All reported results are within defined laboratory quality control objectives unless listed below or otherwise qualified in this report.

The results of analyses reported only relate to samples submitted to the Con-Test Analytical Laboratory for testing. I certify that the analyses listed above, unless specifically listed as subcontracted, if any, were performed under my direction according to the approved methodologies listed in this document, and that based upon my inquiry of those individuals immediately responsible for obtaining the information, the material contained in this report is, to the best of my knowledge and belief, accurate and complete.

A handwritten signature in cursive script, appearing to read "M. Erickson".

Michael A. Erickson
Laboratory Director



39 Spruce Street * East Longmeadow, MA 01028 * FAX 413/525-6405 * TEL. 413/525-2332

ANALYTICAL RESULTS

Project Location: Hanover School-Meriden
 Date Received: 1/7/2011
 Field Sample #: 0106UA-01A
 Sample ID: 11A0156-01
 Sample Matrix: Air
 Sampled: 1/6/2011 19:57

Sample Description/Location:
 Sub Description/Location:

 Flow Controller ID:
 Sample Type:
 Air Volume L: 1016.4

Work Order: 11A0156

TO-10A/EPA 680 Modified

Analyte	Total µg		Flag	ug/m3		Dilution	Date/Time		Analyst
	Results	RL		Results	RL		Analyzed		
Monochlorobiphenyls	ND	0.0020		ND	0.002	1	1/19/11 13:52		XC
Dichlorobiphenyls	ND	0.0020		ND	0.002	1	1/19/11 13:52		XC
Trichlorobiphenyls	ND	0.0020		ND	0.002	1	1/19/11 13:52		XC
Tetrachlorobiphenyls	ND	0.0040		ND	0.0039	1	1/19/11 13:52		XC
Pentachlorobiphenyls	ND	0.0040		ND	0.0039	1	1/19/11 13:52		XC
Hexachlorobiphenyls	ND	0.0040		ND	0.0039	1	1/19/11 13:52		XC
Heptachlorobiphenyls	ND	0.0060		ND	0.0059	1	1/19/11 13:52		XC
Octachlorobiphenyls	ND	0.0060		ND	0.0059	1	1/19/11 13:52		XC
Nonachlorobiphenyls	ND	0.010		ND	0.0098	1	1/19/11 13:52		XC
Decachlorobiphenyl	ND	0.010		ND	0.0098	1	1/19/11 13:52		XC
Total Polychlorinated biphenyls	0.0			0		1	1/19/11 13:52		XC
Surrogates	% Recovery			% REC Limits					
Tetrachloro-m-xylene	63.0			50-125			1/19/11 13:52		



39 Spruce Street * East Longmeadow, MA 01028 * FAX 413/525-6405 * TEL. 413/525-2332

Sample Extraction Data

Prep Method: SW-846 3540C-TO-10A/EPA 680 Modified

Lab Number [Field ID]	Batch	Initial [Cartridge]	Final [mL]	Date
11A0156-01 [0106UA-01A]	B024796	1.00	1.00	01/13/11



39 Spruce Street * East Longmeadow, MA 01028 * FAX 413/525-6405 * TEL. 413/525-2332

QUALITY CONTROL

PCB Homologues by GC/MS - Quality Control

Analyte	Total µg		ug/m3		Spike Level	Source	%REC	%REC	RPD	RPD	Flag
	Results	RL	Results	RL	Total µg	Result	%REC	Limits	RPD	Limit	
Batch B024796 - SW-846 3540C											
Blank (B024796-BLK1)											
						Prepared: 01/13/11 Analyzed: 01/19/11					
Monochlorobiphenyls	ND	0.0020									
Dichlorobiphenyls	ND	0.0020									
Trichlorobiphenyls	ND	0.0020									
Tetrachlorobiphenyls	ND	0.0040									
Pentachlorobiphenyls	ND	0.0040									
Hexachlorobiphenyls	ND	0.0040									
Heptachlorobiphenyls	ND	0.0060									
Octachlorobiphenyls	ND	0.0060									
Nonachlorobiphenyls	ND	0.010									
Decachlorobiphenyl	ND	0.010									
Total Polychlorinated biphenyls	0.0										
<i>Surrogate: Tetrachloro-m-xylene</i>	<i>0.169</i>				<i>0.200</i>		<i>84.7</i>	<i>50-125</i>			
LCS (B024796-BS1)											
						Prepared: 01/13/11 Analyzed: 01/19/11					
Monochlorobiphenyls	0.16	0.0020			0.200		77.7	40-140			
Dichlorobiphenyls	0.16	0.0020			0.200		77.8	40-140			
Trichlorobiphenyls	0.17	0.0020			0.200		85.2	40-140			
Tetrachlorobiphenyls	0.35	0.0040			0.400		88.3	40-140			
Pentachlorobiphenyls	0.34	0.0040			0.400		85.5	40-140			
Hexachlorobiphenyls	0.32	0.0040			0.400		79.0	40-140			
Heptachlorobiphenyls	0.45	0.0060			0.600		74.4	40-140			
Octachlorobiphenyls	0.43	0.0060			0.600		71.4	40-140			
Nonachlorobiphenyls	0.18	0.010			0.200		88.2	40-140			
Decachlorobiphenyl	0.55	0.010			1.00		54.9	40-140			
<i>Surrogate: Tetrachloro-m-xylene</i>	<i>0.166</i>				<i>0.200</i>		<i>83.0</i>	<i>50-125</i>			
LCS Dup (B024796-BSD1)											
						Prepared: 01/13/11 Analyzed: 01/19/11					
Monochlorobiphenyls	0.16	0.0020			0.200		78.9	40-140	1.55	200	
Dichlorobiphenyls	0.16	0.0020			0.200		79.7	40-140	2.39	200	
Trichlorobiphenyls	0.17	0.0020			0.200		86.5	40-140	1.43	200	
Tetrachlorobiphenyls	0.36	0.0040			0.400		89.9	40-140	1.86	200	
Pentachlorobiphenyls	0.36	0.0040			0.400		89.4	40-140	4.51	200	
Hexachlorobiphenyls	0.34	0.0040			0.400		84.1	40-140	6.32	200	
Heptachlorobiphenyls	0.47	0.0060			0.600		78.0	40-140	4.75	200	
Octachlorobiphenyls	0.43	0.0060			0.600		71.7	40-140	0.440	200	
Nonachlorobiphenyls	0.18	0.010			0.200		90.4	40-140	2.51	200	
Decachlorobiphenyl	0.55	0.010			1.00		54.8	40-140	0.180	200	
<i>Surrogate: Tetrachloro-m-xylene</i>	<i>0.164</i>				<i>0.200</i>		<i>82.1</i>	<i>50-125</i>			

FLAG/QUALIFIER SUMMARY

- * QC result is outside of established limits.
- † Wide recovery limits established for difficult compound.
- ‡ Wide RPD limits established for difficult compound.
- # Data exceeded client recommended or regulatory level

Percent recoveries and relative percent differences (RPDs) are determined by the software using values in the calculation which have not been rounded.



39 Spruce Street * East Longmeadow, MA 01028 * FAX 413/525-6405 * TEL. 413/525-2332

Certified Analyses included in this Report

CERTIFICATIONS

Analyte Certifications

TO-10A/EPA 680 Modified in Air

Total Polychlorinated biphenyls AIHA

The CON-TEST Environmental Laboratory operates under the following certifications and accreditations:

Code	Description	Number	Expires
AIHA	American Industrial Hygiene Association	100033	01/1/2012
MA	Massachusetts DEP	M-MA100	06/30/2011
CT	Connecticut Department of Public Health	PH-0567	09/30/2011
NY	New York State Department of Health	10899 NELAP	04/1/2011
NH	New Hampshire Environmental Lab	2516 NELAP	02/5/2011
RI	Rhode Island Department of Health	LAO00112	12/30/2011
NC	North Carolina Div. of Water Quality	652	12/31/2011
NJ	New Jersey DEP	MA007 NELAP	06/30/2011
FL	Florida Department of Health	E871027 NELAP	06/30/2011
VT	Vermont Department of Health Lead Laboratory	LL015036	07/30/2011
WA	State of Washington Department of Ecology	C2065	02/23/2011



FUSS & O'NEILL

Disciplines in Defense

1941-646-2460 • www.fossandoneill.com

11A0156

- 146 Hartford Road, Manchester, CT 06040
- 56 Quarry Road, Trumbull, CT 06611
- 1419 Redland Street, Columbia, SC 29201
- 78 Interstate Drive, West Springfield, MA 01099

- 50 Redfield Street, Suite 100, Boston, MA 02122
- 275 Promenade Street, Suite 350, Providence, RI 02908
- 80 Washington Street, Suite 301, Patchkeepsie, NY 12661

CHAIN-OF-CUSTODY RECORD 22616

PROJECT NAME

PROJECT LOCATION

PROJECT NUMBER

REPORT TO: Karron Redfield, Kevin Miller Hanover School - Menden, CT 20081473.A1E

LABORATORY Con-Test

INVOICE TO:

P.O. NO.:

Analysis Request

Containers

Sampler's Signature: Walter August / Erik Pappas Date: 1/6/11

Source Codes: AW=Monitoring Well PW=Potable Water S=Soil SW=Surface Water I=Treatment Facility B=Sediment

W=Water A=Air

X=Other WIPES

Item No.	Transfer Check	Sample Number	Source Code	Date Sampled	Time Sampled
1		010611A	A	1-6-10	15:55
2		01A			
3					
4					

PCBs Soxhlet Homologs

- Soil VOA Vial, [] methanol [] water [] Na₂SO₄
- Glass Soil Container () oz
- Water VOA Vial, [] As is [] HCl [] H₂SO₄
- Plastic - As is, [] 250 ml [] 500 [] 1000 ml
- Plastic - H₂SO₄, [] 250 ml [] 500 ml [] Filtered [] Unfiltered
- Plastic - NaOH, 250 ml

03 oilw, Rm. 2A, sill W 1-6-10 15:50 ✓

02 oilw, Rm. 2A, sill W 1-6-10 21:20 ✓

Wipe Samples reported on 11A0173

Transfer Number	Relinquished By	Accepted By	Date	Time	Reporting and Detection Limit Requirements:
1	<u>[Signature]</u>	<u>[Signature]</u>	<u>1/6/11</u>	<u>22:25</u>	
2	<u>[Signature]</u>	<u>[Signature]</u>	<u>1/7/11</u>	<u>10:30</u>	Additional Comments:
3	<u>[Signature]</u>	<u>[Signature]</u>	<u>1/7/11</u>	<u>14:47</u>	
4					

19:57 4.2 1060.4
19m volume
store comments



Sample Receipt Checklist

CLIENT NAME: Fuss & O'Neill RECEIVED BY: CVS DATE: 1/7/11

- 1) Was the chain(s) of custody relinquished and signed? Yes No
 2) Does the chain agree with the samples? Yes No
 If not, explain: _____
 3) Are all the samples in good condition? Yes No
 If not, explain: _____

4) How were the samples received:
 On Ice Direct from Sampling Ambient In Cooler(s)
 Were the samples received in Temperature Compliance of (2-6°C)? Yes No N/A
 Temperature °C by Temp blank _____ Temperature °C by Temp gun 6.0°C

- 5) Are there Dissolved samples for the lab to filter? Yes No
 Who was notified _____ Date _____ Time _____
 6) Are there any samples "On Hold"? Yes No Stored where: _____
 7) Are there any RUSH or SHORT HOLDING TIME samples? Yes No
 Who was notified _____ Date _____ Time _____

8) Location where samples are stored: 19
 Permission to subcontract samples? Yes No
 (Walk-in clients only) if not already approved
 Client Signature: _____

Containers received at Con-Test

		# of containers			# of containers
1 Liter Amber			8 oz amber/clear jar		
500 mL Amber			4 oz amber/clear jar		2
250 mL Amber (8oz amber)			2 oz amber/clear jar		
1 Liter Plastic			Other glass jar		
500 mL Plastic			Plastic Bag / Ziploc		
250 mL plastic			Air Cassette		
40 mL Vial - type listed below			SOC Kit		
Colisure / bacteria bottle			Tubes		
Dissolved Oxygen bottle			Non-ConTest Container		
Flashpoint bottle			Other		
Encore			PM 2.5 / PM 10		
Perchlorate Kit			PUF Cartridge		/

Laboratory Comments: _____

40 mL vials: # HCl _____ # Methanol _____
 # Bisulfate _____ # DI Water _____
 # Thiosulfate _____ Unpreserved _____

Time and Date Frozen: _____

Do all samples have the proper Acid pH: Yes No N/A
 Do all samples have the proper Base pH: Yes No N/A



39 Spruce Street * East Longmeadow, MA 01028 * FAX 413/525-6405 * TEL. 413/525-2332

January 25, 2011

Kevin Miller
Fuss & O'Neill EnviroScience, LLC - CT
146 Hartford Road
Manchester, CT 06040

Project Location: Hanover School-Meriden
Client Job Number:
Project Number: 20081473.A1E
Laboratory Work Order Number: 11A0158

Enclosed are results of analyses for samples received by the laboratory on January 7, 2011. If you have any questions concerning this report, please feel free to contact me.

Sincerely,

A handwritten signature in cursive script that reads "Holly L. Folsom".

Holly L. Folsom
Project Manager



39 Spruce Street * East Longmeadow, MA 01028 * FAX 413/525-6405 * TEL. 413/525-2332

Fuss & O'Neill EnviroScience, LLC - CT
146 Hartford Road
Manchester, CT 06040
ATTN: Kevin Miller

REPORT DATE: 1/25/2011

PURCHASE ORDER NUMBER:

PROJECT NUMBER: 20081473.A1E

ANALYTICAL SUMMARY

WORK ORDER NUMBER: 11A0158

The results of analyses performed on the following samples submitted to the CON-TEST Analytical Laboratory are found in this report.

PROJECT LOCATION: Hanover School-Meriden

FIELD SAMPLE #	LAB ID:	MATRIX	SAMPLE DESCRIPTION	TEST	SUB LAB
0106EMM-02A	11A0158-01	Air		TO-10A/EPA 680 Modified	
0106EMM-03A	11A0158-02	Air		TO-10A/EPA 680 Modified	
0106EMM-04A	11A0158-03	Air		TO-10A/EPA 680 Modified	
0106EMM-05A	11A0158-04	Air		TO-10A/EPA 680 Modified	
0106EMM-06A	11A0158-05	Air		TO-10A/EPA 680 Modified	
0106EMM-07A	11A0158-06	Air		TO-10A/EPA 680 Modified	
0106EMM-08A	11A0158-07	Air		TO-10A/EPA 680 Modified	
0106EMM-09A	11A0158-08	Air		TO-10A/EPA 680 Modified	
0106EMM-10A	11A0158-09	Air		TO-10A/EPA 680 Modified	



39 Spruce Street * East Longmeadow, MA 01028 * FAX 413/525-6405 * TEL. 413/525-2332

CASE NARRATIVE SUMMARY

All reported results are within defined laboratory quality control objectives unless listed below or otherwise qualified in this report.

TO-10A/EPA 680 Modified

Qualifications:

The surrogate recovery for this sample is not available due to sample dilution below the surrogate reporting limit required from high analyte concentration and/or matrix interferences.

Analyte & Samples(s) Qualified:

Tetrachloro-m-xylene

11A0158-02[0106EMM-03A]

Elevated detection limit due to matrix. Chromatogram is attached.

Analyte & Samples(s) Qualified:

Decachlorobiphenyl, Dichlorobiphenyls, Heptachlorobiphenyls, Hexachlorobiphenyls, Monochlorobiphenyls, Nonachlorobiphenyls, Octachlorobiphenyls, Pentachlorobiphenyls, Tetrachlorobiphenyls, Total Polychlorinated biphenyls, Trichlorobiphenyls
11A0158-02[0106EMM-03A]

The results of analyses reported only relate to samples submitted to the Con-Test Analytical Laboratory for testing. I certify that the analyses listed above, unless specifically listed as subcontracted, if any, were performed under my direction according to the approved methodologies listed in this document, and that based upon my inquiry of those individuals immediately responsible for obtaining the information, the material contained in this report is, to the best of my knowledge and belief, accurate and complete.

Michael A. Erickson
Laboratory Director



39 Spruce Street * East Longmeadow, MA 01028 * FAX 413/525-6405 * TEL. 413/525-2332

ANALYTICAL RESULTS

Project Location: Hanover School-Meriden
 Date Received: 1/7/2011
 Field Sample #: 0106EMM-02A
 Sample ID: 11A0158-01
 Sample Matrix: Air
 Sampled: 1/6/2011 20:01

Sample Description/Location:
 Sub Description/Location:
 Flow Controller ID:
 Sample Type:
 Air Volume L: 1020.6

Work Order: 11A0158

TO-10A/EPA 680 Modified

Analyte	Total µg		Flag	ug/m3		Dilution	Date/Time		Analyst
	Results	RL		Results	RL		Analyzed		
Monochlorobiphenyls	ND	0.0020		ND	0.002	1	1/19/11 14:31		XC
Dichlorobiphenyls	ND	0.0020		ND	0.002	1	1/19/11 14:31		XC
Trichlorobiphenyls	ND	0.0020		ND	0.002	1	1/19/11 14:31		XC
Tetrachlorobiphenyls	ND	0.0040		ND	0.0039	1	1/19/11 14:31		XC
Pentachlorobiphenyls	ND	0.0040		ND	0.0039	1	1/19/11 14:31		XC
Hexachlorobiphenyls	ND	0.0040		ND	0.0039	1	1/19/11 14:31		XC
Heptachlorobiphenyls	ND	0.0060		ND	0.0059	1	1/19/11 14:31		XC
Octachlorobiphenyls	ND	0.0060		ND	0.0059	1	1/19/11 14:31		XC
Nonachlorobiphenyls	ND	0.010		ND	0.0098	1	1/19/11 14:31		XC
Decachlorobiphenyl	ND	0.010		ND	0.0098	1	1/19/11 14:31		XC
Total Polychlorinated biphenyls	0.0			0		1	1/19/11 14:31		XC
Surrogates	% Recovery			% REC Limits					
Tetrachloro-m-xylene	72.1			50-125			1/19/11 14:31		



39 Spruce Street * East Longmeadow, MA 01028 * FAX 413/525-6405 * TEL. 413/525-2332

ANALYTICAL RESULTS

Project Location: Hanover School-Meriden
 Date Received: 1/7/2011
 Field Sample #: 0106EMM-03A
 Sample ID: 11A0158-02
 Sample Matrix: Air
 Sampled: 1/6/2011 20:04

Sample Description/Location:
 Sub Description/Location:

 Flow Controller ID:
 Sample Type:
 Air Volume L: 1012.2

Work Order: 11A0158

TO-10A/EPA 680 Modified

Analyte	Total µg			ug/m3		Dilution	Date/Time		Analyst
	Results	RL	Flag	Results	RL		Analized		
Monochlorobiphenyls	ND	0.040	Z-01	ND	0.040	20	1/19/11 21:41		XC
Dichlorobiphenyls	ND	0.040	Z-01	ND	0.040	20	1/19/11 21:41		XC
Trichlorobiphenyls	ND	0.040	Z-01	ND	0.040	20	1/19/11 21:41		XC
Tetrachlorobiphenyls	ND	0.080	Z-01	ND	0.079	20	1/19/11 21:41		XC
Pentachlorobiphenyls	ND	0.080	Z-01	ND	0.079	20	1/19/11 21:41		XC
Hexachlorobiphenyls	ND	0.080	Z-01	ND	0.079	20	1/19/11 21:41		XC
Heptachlorobiphenyls	ND	0.12	Z-01	ND	0.12	20	1/19/11 21:41		XC
Octachlorobiphenyls	ND	0.12	Z-01	ND	0.12	20	1/19/11 21:41		XC
Nonachlorobiphenyls	ND	0.20	Z-01	ND	0.20	20	1/19/11 21:41		XC
Decachlorobiphenyl	ND	0.20	Z-01	ND	0.20	20	1/19/11 21:41		XC
Total Polychlorinated biphenyls	0.0		Z-01	0		20	1/19/11 21:41		XC
Surrogates	% Recovery			% REC Limits					
Tetrachloro-m-xylene		*	S-01	50-125			1/19/11 21:41		



39 Spruce Street * East Longmeadow, MA 01028 * FAX 413/525-6405 * TEL. 413/525-2332

ANALYTICAL RESULTS

Project Location: Hanover School-Meriden
 Date Received: 1/7/2011
 Field Sample #: 0106EMM-04A
 Sample ID: 11A0158-03
 Sample Matrix: Air
 Sampled: 1/6/2011 20:08

Sample Description/Location:
 Sub Description/Location:
 Flow Controller ID:
 Sample Type:
 Air Volume L: 1012.2

Work Order: 11A0158

TO-10A/EPA 680 Modified

Analyte	Total µg		Flag	ug/m3		Dilution	Date/Time		Analyst
	Results	RL		Results	RL		Analyzed		
Monochlorobiphenyls	ND	0.0020		ND	0.002	1	1/19/11	15:11	XC
Dichlorobiphenyls	ND	0.0020		ND	0.002	1	1/19/11	15:11	XC
Trichlorobiphenyls	ND	0.0020		ND	0.002	1	1/19/11	15:11	XC
Tetrachlorobiphenyls	ND	0.0040		ND	0.004	1	1/19/11	15:11	XC
Pentachlorobiphenyls	ND	0.0040		ND	0.004	1	1/19/11	15:11	XC
Hexachlorobiphenyls	ND	0.0040		ND	0.004	1	1/19/11	15:11	XC
Heptachlorobiphenyls	ND	0.0060		ND	0.0059	1	1/19/11	15:11	XC
Octachlorobiphenyls	ND	0.0060		ND	0.0059	1	1/19/11	15:11	XC
Nonachlorobiphenyls	ND	0.010		ND	0.0099	1	1/19/11	15:11	XC
Decachlorobiphenyl	ND	0.010		ND	0.0099	1	1/19/11	15:11	XC
Total Polychlorinated biphenyls	0.0			0		1	1/19/11	15:11	XC
Surrogates	% Recovery			% REC Limits					
Tetrachloro-m-xylene	74.8			50-125				1/19/11 15:11	



39 Spruce Street * East Longmeadow, MA 01028 * FAX 413/525-6405 * TEL. 413/525-2332

ANALYTICAL RESULTS

Project Location: Hanover School-Meriden
 Date Received: 1/7/2011
 Field Sample #: 0106EMM-05A
 Sample ID: 11A0158-04
 Sample Matrix: Air
 Sampled: 1/6/2011 20:10

Sample Description/Location:
 Sub Description/Location:

 Flow Controller ID:
 Sample Type:
 Air Volume L: 1016.4

Work Order: 11A0158

TO-10A/EPA 680 Modified

Analyte	Total µg		Flag	ug/m3		Dilution	Date/Time Analyzed	Analyst
	Results	RL		Results	RL			
Monochlorobiphenyls	ND	0.0020		ND	0.002	1	1/19/11 15:50	XC
Dichlorobiphenyls	ND	0.0020		ND	0.002	1	1/19/11 15:50	XC
Trichlorobiphenyls	ND	0.0020		ND	0.002	1	1/19/11 15:50	XC
Tetrachlorobiphenyls	ND	0.0040		ND	0.0039	1	1/19/11 15:50	XC
Pentachlorobiphenyls	ND	0.0040		ND	0.0039	1	1/19/11 15:50	XC
Hexachlorobiphenyls	ND	0.0040		ND	0.0039	1	1/19/11 15:50	XC
Heptachlorobiphenyls	ND	0.0060		ND	0.0059	1	1/19/11 15:50	XC
Octachlorobiphenyls	ND	0.0060		ND	0.0059	1	1/19/11 15:50	XC
Nonachlorobiphenyls	ND	0.010		ND	0.0098	1	1/19/11 15:50	XC
Decachlorobiphenyl	ND	0.010		ND	0.0098	1	1/19/11 15:50	XC
Total Polychlorinated biphenyls	0.0			0		1	1/19/11 15:50	XC

Surrogates	% Recovery	% REC Limits	
Tetrachloro-m-xylene	78.6	50-125	1/19/11 15:50



39 Spruce Street * East Longmeadow, MA 01028 * FAX 413/525-6405 * TEL. 413/525-2332

ANALYTICAL RESULTS

Project Location: Hanover School-Meriden
 Date Received: 1/7/2011
 Field Sample #: 0106EMM-06A
 Sample ID: 11A0158-05
 Sample Matrix: Air
 Sampled: 1/6/2011 20:16

Sample Description/Location:
 Sub Description/Location:

 Flow Controller ID:
 Sample Type:
 Air Volume L: 1024.8

Work Order: 11A0158

TO-10A/EPA 680 Modified

Analyte	Total µg		Flag	ug/m3		Dilution	Date/Time		Analyst
	Results	RL		Results	RL		Analyzed		
Monochlorobiphenyls	ND	0.0020		ND	0.002	1	1/19/11 16:29		XC
Dichlorobiphenyls	ND	0.0020		ND	0.002	1	1/19/11 16:29		XC
Trichlorobiphenyls	ND	0.0020		ND	0.002	1	1/19/11 16:29		XC
Tetrachlorobiphenyls	ND	0.0040		ND	0.0039	1	1/19/11 16:29		XC
Pentachlorobiphenyls	ND	0.0040		ND	0.0039	1	1/19/11 16:29		XC
Hexachlorobiphenyls	ND	0.0040		ND	0.0039	1	1/19/11 16:29		XC
Heptachlorobiphenyls	ND	0.0060		ND	0.0059	1	1/19/11 16:29		XC
Octachlorobiphenyls	ND	0.0060		ND	0.0059	1	1/19/11 16:29		XC
Nonachlorobiphenyls	ND	0.010		ND	0.0098	1	1/19/11 16:29		XC
Decachlorobiphenyl	ND	0.010		ND	0.0098	1	1/19/11 16:29		XC
Total Polychlorinated biphenyls	0.0			0		1	1/19/11 16:29		XC
Surrogates	% Recovery			% REC Limits					
Tetrachloro-m-xylene	77.0			50-125			1/19/11 16:29		



39 Spruce Street * East Longmeadow, MA 01028 * FAX 413/525-6405 * TEL. 413/525-2332

ANALYTICAL RESULTS

Project Location: Hanover School-Meriden
 Date Received: 1/7/2011
 Field Sample #: 0106EMM-07A
 Sample ID: 11A0158-06
 Sample Matrix: Air
 Sampled: 1/6/2011 20:20

Sample Description/Location:
 Sub Description/Location:
 Flow Controller ID:
 Sample Type:
 Air Volume L: 1029

Work Order: 11A0158

TO-10A/EPA 680 Modified

Analyte	Total µg		Flag	ug/m3		Dilution	Date/Time		Analyst
	Results	RL		Results	RL		Analyzed		
Monochlorobiphenyls	ND	0.0020		ND	0.0019	1	1/19/11 17:08		XC
Dichlorobiphenyls	ND	0.0020		ND	0.0019	1	1/19/11 17:08		XC
Trichlorobiphenyls	ND	0.0020		ND	0.0019	1	1/19/11 17:08		XC
Tetrachlorobiphenyls	ND	0.0040		ND	0.0039	1	1/19/11 17:08		XC
Pentachlorobiphenyls	ND	0.0040		ND	0.0039	1	1/19/11 17:08		XC
Hexachlorobiphenyls	ND	0.0040		ND	0.0039	1	1/19/11 17:08		XC
Heptachlorobiphenyls	ND	0.0060		ND	0.0058	1	1/19/11 17:08		XC
Octachlorobiphenyls	ND	0.0060		ND	0.0058	1	1/19/11 17:08		XC
Nonachlorobiphenyls	ND	0.010		ND	0.0097	1	1/19/11 17:08		XC
Decachlorobiphenyl	ND	0.010		ND	0.0097	1	1/19/11 17:08		XC
Total Polychlorinated biphenyls	0.0			0		1	1/19/11 17:08		XC
Surrogates	% Recovery			% REC Limits					
Tetrachloro-m-xylene	73.1			50-125			1/19/11 17:08		



39 Spruce Street * East Longmeadow, MA 01028 * FAX 413/525-6405 * TEL. 413/525-2332

ANALYTICAL RESULTS

Project Location: Hanover School-Meriden
 Date Received: 1/7/2011
 Field Sample #: 0106EMM-08A
 Sample ID: 11A0158-07
 Sample Matrix: Air
 Sampled: 1/6/2011 20:32

Sample Description/Location:
 Sub Description/Location:
 Flow Controller ID:
 Sample Type:
 Air Volume L: 1020.6

Work Order: 11A0158

TO-10A/EPA 680 Modified

Analyte	Total µg		Flag	ug/m3		Dilution	Date/Time		Analyst
	Results	RL		Results	RL		Analyzed		
Monochlorobiphenyls	ND	0.0020		ND	0.002	1	1/19/11 17:48		XC
Dichlorobiphenyls	ND	0.0020		ND	0.002	1	1/19/11 17:48		XC
Trichlorobiphenyls	ND	0.0020		ND	0.002	1	1/19/11 17:48		XC
Tetrachlorobiphenyls	ND	0.0040		ND	0.0039	1	1/19/11 17:48		XC
Pentachlorobiphenyls	ND	0.0040		ND	0.0039	1	1/19/11 17:48		XC
Hexachlorobiphenyls	ND	0.0040		ND	0.0039	1	1/19/11 17:48		XC
Heptachlorobiphenyls	ND	0.0060		ND	0.0059	1	1/19/11 17:48		XC
Octachlorobiphenyls	ND	0.0060		ND	0.0059	1	1/19/11 17:48		XC
Nonachlorobiphenyls	ND	0.010		ND	0.0098	1	1/19/11 17:48		XC
Decachlorobiphenyl	ND	0.010		ND	0.0098	1	1/19/11 17:48		XC
Total Polychlorinated biphenyls	0.0			0		1	1/19/11 17:48		XC
Surrogates	% Recovery			% REC Limits					
Tetrachloro-m-xylene	75.9			50-125			1/19/11 17:48		



39 Spruce Street * East Longmeadow, MA 01028 * FAX 413/525-6405 * TEL. 413/525-2332

ANALYTICAL RESULTS

Project Location: Hanover School-Meriden
 Date Received: 1/7/2011
 Field Sample #: 0106EMM-09A
 Sample ID: 11A0158-08
 Sample Matrix: Air
 Sampled: 1/6/2011 20:26

Sample Description/Location:
 Sub Description/Location:

 Flow Controller ID:
 Sample Type:
 Air Volume L: 1020.6

Work Order: 11A0158

TO-10A/EPA 680 Modified

Analyte	Total µg		Flag	ug/m3		Dilution	Date/Time		Analyst
	Results	RL		Results	RL		Analyzed		
Monochlorobiphenyls	ND	0.0020		ND	0.002	1	1/19/11 18:27		XC
Dichlorobiphenyls	ND	0.0020		ND	0.002	1	1/19/11 18:27		XC
Trichlorobiphenyls	ND	0.0020		ND	0.002	1	1/19/11 18:27		XC
Tetrachlorobiphenyls	ND	0.0040		ND	0.0039	1	1/19/11 18:27		XC
Pentachlorobiphenyls	ND	0.0040		ND	0.0039	1	1/19/11 18:27		XC
Hexachlorobiphenyls	ND	0.0040		ND	0.0039	1	1/19/11 18:27		XC
Heptachlorobiphenyls	ND	0.0060		ND	0.0059	1	1/19/11 18:27		XC
Octachlorobiphenyls	ND	0.0060		ND	0.0059	1	1/19/11 18:27		XC
Nonachlorobiphenyls	ND	0.010		ND	0.0098	1	1/19/11 18:27		XC
Decachlorobiphenyl	ND	0.010		ND	0.0098	1	1/19/11 18:27		XC
Total Polychlorinated biphenyls	0.0			0		1	1/19/11 18:27		XC
Surrogates	% Recovery			% REC Limits					
Tetrachloro-m-xylene	72.0			50-125			1/19/11 18:27		



39 Spruce Street * East Longmeadow, MA 01028 * FAX 413/525-6405 * TEL. 413/525-2332

ANALYTICAL RESULTS

Project Location: Hanover School-Meriden
 Date Received: 1/7/2011
 Field Sample #: 0106EMM-10A
 Sample ID: 11A0158-09
 Sample Matrix: Air
 Sampled: 1/6/2011 20:30

Sample Description/Location:
 Sub Description/Location:

 Flow Controller ID:
 Sample Type:
 Air Volume L: 1024.8

Work Order: 11A0158

TO-10A/EPA 680 Modified

Analyte	Total µg		Flag	ug/m3		Dilution	Date/Time Analyzed	Analyst
	Results	RL		Results	RL			
Monochlorobiphenyls	ND	0.0020		ND	0.002	1	1/19/11 19:06	XC
Dichlorobiphenyls	ND	0.0020		ND	0.002	1	1/19/11 19:06	XC
Trichlorobiphenyls	ND	0.0020		ND	0.002	1	1/19/11 19:06	XC
Tetrachlorobiphenyls	ND	0.0040		ND	0.0039	1	1/19/11 19:06	XC
Pentachlorobiphenyls	ND	0.0040		ND	0.0039	1	1/19/11 19:06	XC
Hexachlorobiphenyls	ND	0.0040		ND	0.0039	1	1/19/11 19:06	XC
Heptachlorobiphenyls	ND	0.0060		ND	0.0059	1	1/19/11 19:06	XC
Octachlorobiphenyls	ND	0.0060		ND	0.0059	1	1/19/11 19:06	XC
Nonachlorobiphenyls	ND	0.010		ND	0.0098	1	1/19/11 19:06	XC
Decachlorobiphenyl	ND	0.010		ND	0.0098	1	1/19/11 19:06	XC
Total Polychlorinated biphenyls	0.0			0		1	1/19/11 19:06	XC
Surrogates	% Recovery			% REC Limits				
Tetrachloro-m-xylene	72.0			50-125			1/19/11 19:06	



39 Spruce Street * East Longmeadow, MA 01028 * FAX 413/525-6405 * TEL. 413/525-2332

Sample Extraction Data

Prep Method: SW-846 3540C-TO-10A/EPA 680 Modified

Lab Number [Field ID]	Batch	Initial [Cartridge]	Final [mL]	Date
11A0158-01 [0106EMM-02A]	B024796	1.00	1.00	01/13/11
11A0158-02 [0106EMM-03A]	B024796	1.00	1.00	01/13/11
11A0158-03 [0106EMM-04A]	B024796	1.00	1.00	01/13/11
11A0158-04 [0106EMM-05A]	B024796	1.00	1.00	01/13/11
11A0158-05 [0106EMM-06A]	B024796	1.00	1.00	01/13/11
11A0158-06 [0106EMM-07A]	B024796	1.00	1.00	01/13/11
11A0158-07 [0106EMM-08A]	B024796	1.00	1.00	01/13/11
11A0158-08 [0106EMM-09A]	B024796	1.00	1.00	01/13/11
11A0158-09 [0106EMM-10A]	B024796	1.00	1.00	01/13/11



39 Spruce Street * East Longmeadow, MA 01028 * FAX 413/525-6405 * TEL. 413/525-2332

QUALITY CONTROL

PCB Homologues by GC/MS - Quality Control

Analyte	Total µg		ug/m3		Spike Level Total µg	Source Result	%REC Limits	RPD	RPD Limit	Flag
	Results	RL	Results	RL						

Batch B024796 - SW-846 3540C

Blank (B024796-BLK1)

Prepared: 01/13/11 Analyzed: 01/19/11

Monochlorobiphenyls	ND	0.0020
Dichlorobiphenyls	ND	0.0020
Trichlorobiphenyls	ND	0.0020
Tetrachlorobiphenyls	ND	0.0040
Pentachlorobiphenyls	ND	0.0040
Hexachlorobiphenyls	ND	0.0040
Heptachlorobiphenyls	ND	0.0060
Octachlorobiphenyls	ND	0.0060
Nonachlorobiphenyls	ND	0.010
Decachlorobiphenyl	ND	0.010
Total Polychlorinated biphenyls	0.0	

Surrogate: Tetrachloro-m-xylene

0.169

0.200

84.7

50-125

LCS (B024796-BS1)

Prepared: 01/13/11 Analyzed: 01/19/11

Monochlorobiphenyls	0.16	0.0020	0.200	77.7	40-140
Dichlorobiphenyls	0.16	0.0020	0.200	77.8	40-140
Trichlorobiphenyls	0.17	0.0020	0.200	85.2	40-140
Tetrachlorobiphenyls	0.35	0.0040	0.400	88.3	40-140
Pentachlorobiphenyls	0.34	0.0040	0.400	85.5	40-140
Hexachlorobiphenyls	0.32	0.0040	0.400	79.0	40-140
Heptachlorobiphenyls	0.45	0.0060	0.600	74.4	40-140
Octachlorobiphenyls	0.43	0.0060	0.600	71.4	40-140
Nonachlorobiphenyls	0.18	0.010	0.200	88.2	40-140
Decachlorobiphenyl	0.55	0.010	1.00	54.9	40-140

Surrogate: Tetrachloro-m-xylene

0.166

0.200

83.0

50-125

LCS Dup (B024796-BSD1)

Prepared: 01/13/11 Analyzed: 01/19/11

Monochlorobiphenyls	0.16	0.0020	0.200	78.9	40-140	1.55	200
Dichlorobiphenyls	0.16	0.0020	0.200	79.7	40-140	2.39	200
Trichlorobiphenyls	0.17	0.0020	0.200	86.5	40-140	1.43	200
Tetrachlorobiphenyls	0.36	0.0040	0.400	89.9	40-140	1.86	200
Pentachlorobiphenyls	0.36	0.0040	0.400	89.4	40-140	4.51	200
Hexachlorobiphenyls	0.34	0.0040	0.400	84.1	40-140	6.32	200
Heptachlorobiphenyls	0.47	0.0060	0.600	78.0	40-140	4.75	200
Octachlorobiphenyls	0.43	0.0060	0.600	71.7	40-140	0.440	200
Nonachlorobiphenyls	0.18	0.010	0.200	90.4	40-140	2.51	200
Decachlorobiphenyl	0.55	0.010	1.00	54.8	40-140	0.180	200

Surrogate: Tetrachloro-m-xylene

0.164

0.200

82.1

50-125



39 Spruce Street * East Longmeadow, MA 01028 * FAX 413/525-6405 * TEL. 413/525-2332

FLAG/QUALIFIER SUMMARY

- * QC result is outside of established limits.
 - † Wide recovery limits established for difficult compound.
 - ‡ Wide RPD limits established for difficult compound.
 - # Data exceeded client recommended or regulatory level
- Percent recoveries and relative percent differences (RPDs) are determined by the software using values in the calculation which have not been rounded.
- S-01 The surrogate recovery for this sample is not available due to sample dilution below the surrogate reporting limit required from high analyte concentration and/or matrix interferences.
 - Z-01 Elevated detection limit due to matrix. Chromatogram is attached.



39 Spruce Street * East Longmeadow, MA 01028 * FAX 413/525-6405 * TEL. 413/525-2332

Certified Analyses included in this Report

CERTIFICATIONS

Analyte Certifications

TO-10A/EPA 680 Modified in Air

Total Polychlorinated biphenyls AIHA

The CON-TEST Environmental Laboratory operates under the following certifications and accreditations:

Code	Description	Number	Expires
AIHA	American Industrial Hygiene Association	100033	01/1/2012
MA	Massachusetts DEP	M-MA100	06/30/2011
CT	Connecticut Department of Public Health	PH-0567	09/30/2011
NY	New York State Department of Health	10899 NELAP	04/1/2011
NH	New Hampshire Environmental Lab	2516 NELAP	02/5/2011
RI	Rhode Island Department of Health	LAO00112	12/30/2011
NC	North Carolina Div. of Water Quality	652	12/31/2011
NJ	New Jersey DEP	MA007 NELAP	06/30/2011
FL	Florida Department of Health	E871027 NELAP	06/30/2011
VT	Vermont Department of Health Lead Laboratory	LL015036	07/30/2011
WA	State of Washington Department of Ecology	C2065	02/23/2011



FUSS & O'NEILL
Disciplines in Delivery
800-646-2400 • www.fond.com

11A 0158

- 146 Hartford Road, Manchester, CT 06040
- 56 Quarry Road, Trumbull, CT 06611
- 1419 Rutland Street, Columbia, SC 29209
- 78 Interstate Drive, West Springfield, MA 01180

- 50 Redfield Street, Suite 109, Boston, MA 02122
- 275 Providence Street, Suite 350, Providence, RI 02903
- 80 Washington Street, Suite 301, Poughkeepsie, NY 12550

CHAIN-OF-CUSTODY RECORD 22617

PROJECT NAME: Theround

PROJECT LOCATION: Hanover School - Meriden, CT

PROJECT NUMBER: 20081473. A1E

REPORT TO: Karron Redfield, Kevin Miller

P.O. NO.:

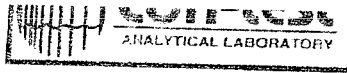
LABORATORY: Con-Test

Sampler's Signature: Sander Myrd Myrd Date: 1-6-10

Source Codes: MW=Monitoring Well PW=Portable Water S=Soil
 SW=Surface Water T=Treatment Facility B=Sediment W=Waste X=Air

Item No.	Transfer (check)	Sample Number	Source Code	Date Sampled	Time Sampled	Analysis Request	Containers	Step	Lpm	Vol
01		02A	A	1-6-10	15:58	PCBs Soxhlet Homologue	Glass VOA Vial () methanol		4.2	100
02		03A			16:03		Glass VOA Vial () water		4.2	100
03		04A			16:07		Glass Soil Container () or		4.2	100
04		05A			16:08		Glass Soil Container () or		4.2	100
05		06A			16:12		Other:		4.2	100
06		07A			16:15		Water VOA Vial () or		4.2	100
07		08A			16:20		Glass Amber () ml () HCl		4.2	100
08		09A			16:23		Plastic - As is, () ml () As is () H ₂ SO ₄		4.2	100
09		10A			16:26		Plastic - H ₂ SO ₄ () 250 ml () 500 ml () 1000 ml		4.2	100
		DTA			16:30		Plastic - HNO ₃ 250 ml () Filtered () Unfiltered		4.2	100
							Plastic - NaOH 250 ml			

Transfer Number	Relinquished By	Accepted By	Date	Time	Reporting and Detection Limit Requirements:
1	<u>[Signature]</u>	<u>[Signature]</u>	<u>1/6/10</u>	<u>09:16</u>	
2	<u>[Signature]</u>	<u>[Signature]</u>	<u>1/11/10</u>	<u>10:30</u>	
3	<u>[Signature]</u>	<u>[Signature]</u>	<u>1/11/10</u>	<u>14:00</u>	
4	<u>[Signature]</u>	<u>[Signature]</u>	<u>1/11/10</u>	<u>14:00</u>	



Sample Receipt Checklist

CLIENT NAME: Fuss & O'Neill RECEIVED BY: CYB DATE: 1/7/11

- 1) Was the chain(s) of custody relinquished and signed? Yes No
- 2) Does the chain agree with the samples? Yes No
If not, explain:
- 3) Are all the samples in good condition? Yes No
If not, explain:

4) How were the samples received:
On Ice Direct from Sampling Ambient In Cooler(s)

Were the samples received in Temperature Compliance of (2-6°C)? Yes No N/A
Temperature °C by Temp blank _____ Temperature °C by Temp gun 6.0°C

5) Are there Dissolved samples for the lab to filter? Yes No
Who was notified _____ Date _____ Time _____

6) Are there any samples "On Hold"? Yes No Stored where:

7) Are there any RUSH or SHORT HOLDING TIME samples? Yes No
Who was notified _____ Date _____ Time _____

8) Location where samples are stored:

Permission to subcontract samples? Yes No
(Walk-in clients only) if not already approved
Client Signature: _____

Containers received at Con-Test

	# of containers		# of containers
1 Liter Amber		8 oz amber/clear jar	
500 mL Amber		4 oz amber/clear jar	
250 mL Amber (8oz amber)		2 oz amber/clear jar	
1 Liter Plastic		Other glass jar	
500 mL Plastic		Plastic Bag / Ziploc	
250 mL plastic		Air Cassette	
40 mL Vial - type listed below		SOC Kit	
Colisure / bacteria bottle		Tubes	
Dissolved Oxygen bottle		Non-ConTest Container	
Flashpoint bottle		Other	
Encore		PM 2.5 / PM 10	
Perchlorate Kit		PUF Cartridge	9

Laboratory Comments:

10 mL vials: # HCl _____ # Methanol _____
Bisulfate _____ # DI Water _____
Thiosulfate _____ Unpreserved _____

Time and Date Frozen: _____

Do all samples have the proper Acid pH: Yes No N/A

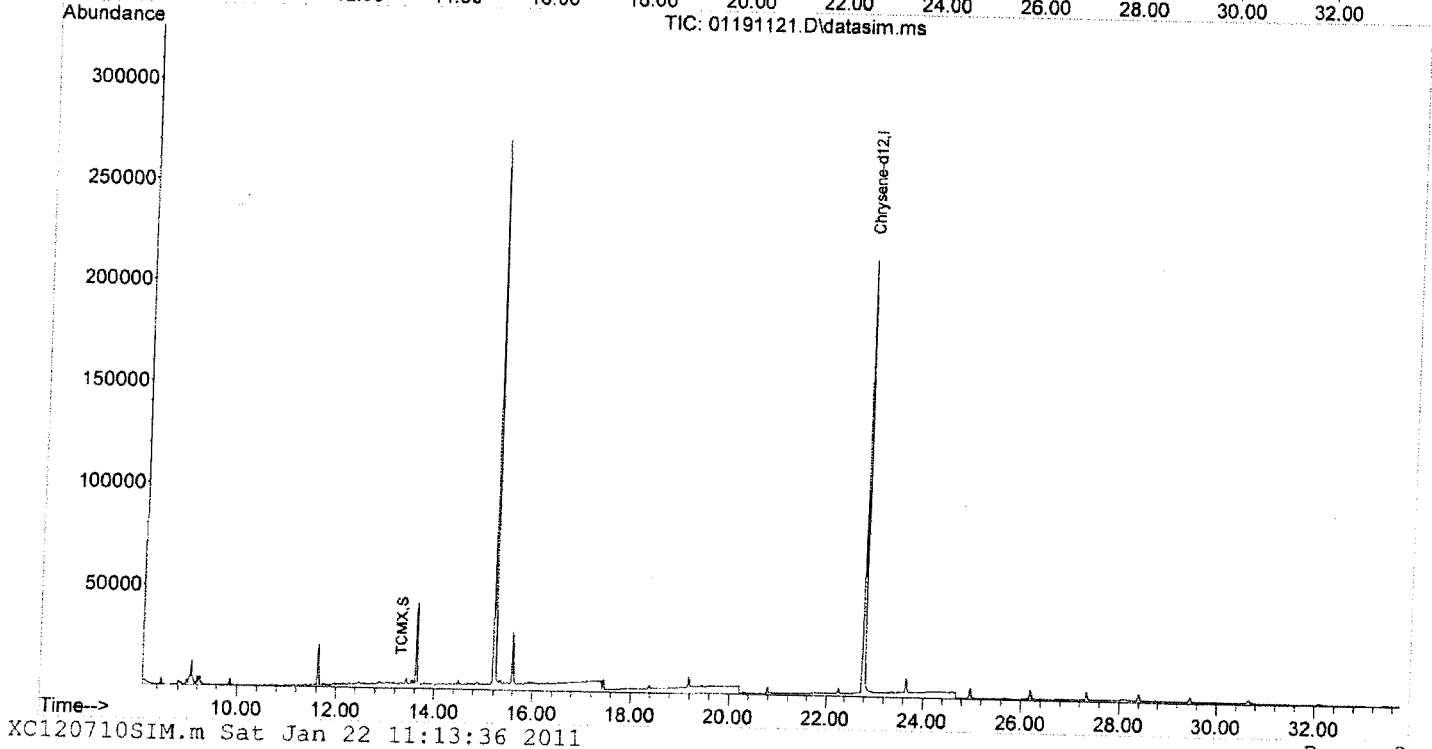
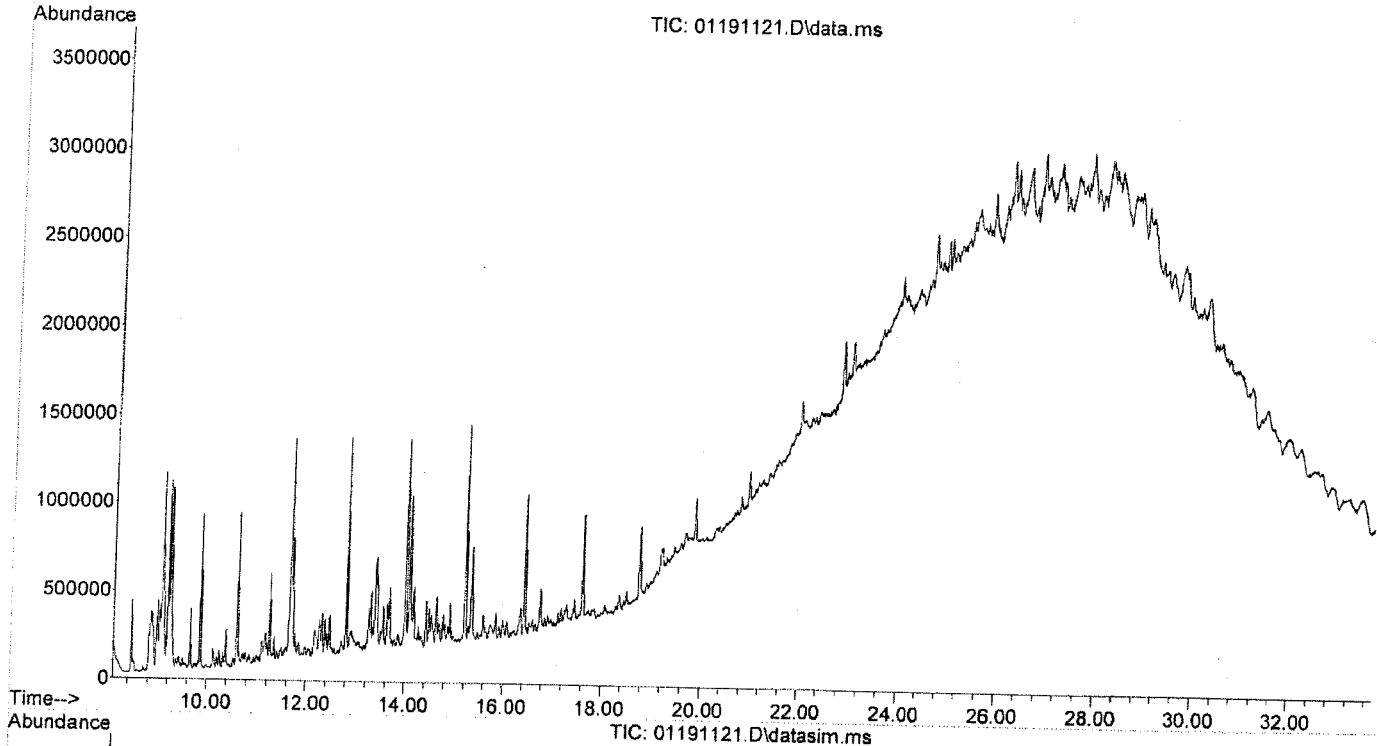
Do all samples have the proper Base pH: Yes No N/A

Quantitation Report (QT Reviewed)

Data Path : C:\msdchem\1\DATA\011911\
Data File : 01191121.D
Acq On : 19 Jan 2011 9:41 pm
Operator : XC
Sample : 11A0158-02 20X
Misc : 2 X 5 UL
ALS Vial : 15 Sample Multiplier: 1

Inst : GCMSSV5

Quant Time: Jan 22 11:13:14 2011
Quant Method : C:\msdchem\1\METHODS\XC120710SIM.m
Quant Title : METHOD 680 INITIAL CALIBRATION
QLast Update : Wed Dec 08 15:59:48 2010
Response via : Initial Calibration



Appendix B

Laboratory Analysis and Chain of Custody: Wipe Sample Analysis



39 Spruce Street * East Longmeadow, MA 01028 * FAX 413/525-6405 * TEL. 413/525-2332

January 25, 2011

Kevin Miller
Fuss & O'Neill EnviroScience, LLC - CT
146 Hartford Road
Manchester, CT 06040

Project Location: Hanover School-Meriden
Client Job Number:
Project Number: 20081473.AIE
Laboratory Work Order Number: 11A0153

Enclosed are results of analyses for samples received by the laboratory on January 7, 2011. If you have any questions concerning this report, please feel free to contact me.

Sincerely,

A handwritten signature in black ink that reads "Holly L. Folsom". The signature is written in a cursive style with a large, prominent initial "H".

Holly L. Folsom
Project Manager



39 Spruce Street * East Longmeadow, MA 01028 * FAX 413/525-6405 * TEL. 413/525-2332

Fuss & O'Neill EnviroScience, LLC - CT
146 Hartford Road
Manchester, CT 06040
ATTN: Kevin Miller

REPORT DATE: 1/25/2011

PURCHASE ORDER NUMBER:

PROJECT NUMBER: 20081473.A1E

ANALYTICAL SUMMARY

WORK ORDER NUMBER: 11A0153

The results of analyses performed on the following samples submitted to the CON-TEST Analytical Laboratory are found in this report.

PROJECT LOCATION: Hanover School-Meriden

FIELD SAMPLE #	LAB ID:	MATRIX	SAMPLE DESCRIPTION	TEST	SUB LAB
0106UA-02W	11A0153-01	Wipe		EPA 680 Modified	
0106UA-03W	11A0153-02	Wipe		EPA 680 Modified	
0106UA-04W	11A0153-03	Wipe		EPA 680 Modified	
0106UA-05W	11A0153-04	Wipe		EPA 680 Modified	
0106UA-06W	11A0153-05	Wipe		EPA 680 Modified	
0106UA-07W	11A0153-06	Wipe		EPA 680 Modified	
0106UA-08W	11A0153-07	Wipe		EPA 680 Modified	
0106UA-09W	11A0153-08	Wipe		EPA 680 Modified	
0106UA-10W	11A0153-09	Wipe		EPA 680 Modified	

CASE NARRATIVE SUMMARY

All reported results are within defined laboratory quality control objectives unless listed below or otherwise qualified in this report.

The results of analyses reported only relate to samples submitted to the Con-Test Analytical Laboratory for testing. I certify that the analyses listed above, unless specifically listed as subcontracted, if any, were performed under my direction according to the approved methodologies listed in this document, and that based upon my inquiry of those individuals immediately responsible for obtaining the information, the material contained in this report is, to the best of my knowledge and belief, accurate and complete.



Michael A. Erickson
Laboratory Director



39 Spruce Street * East Longmeadow, MA 01028 * FAX 413/525-6405 * TEL. 413/525-2332

Project Location: Hanover School-Meriden

Sample Description:

Work Order: 11A0153

Date Received: 1/7/2011

Field Sample #: 0106UA-02W

Sampled: 1/6/2011 15:57

Sample ID: 11A0153-01

Sample Matrix: Wipe

PCB Homologues by GC/MS (Wipe)

Analyte	Results	RL	Units	Dilution	Flag	Method	Date Prepared	Date/Time Analyzed	Analyst
Monochlorobiphenyls	ND	0.0020	µg/Wipe	1		EPA 680 Modified	1/10/11	1/14/11 16:51	XC
Dichlorobiphenyls	ND	0.0020	µg/Wipe	1		EPA 680 Modified	1/10/11	1/14/11 16:51	XC
Trichlorobiphenyls	ND	0.0020	µg/Wipe	1		EPA 680 Modified	1/10/11	1/14/11 16:51	XC
Tetrachlorobiphenyls	0.0051	0.0040	µg/Wipe	1		EPA 680 Modified	1/10/11	1/14/11 16:51	XC
Pentachlorobiphenyls	0.016	0.0040	µg/Wipe	1		EPA 680 Modified	1/10/11	1/14/11 16:51	XC
Hexachlorobiphenyls	0.0049	0.0040	µg/Wipe	1		EPA 680 Modified	1/10/11	1/14/11 16:51	XC
Heptachlorobiphenyls	ND	0.0060	µg/Wipe	1		EPA 680 Modified	1/10/11	1/14/11 16:51	XC
Octachlorobiphenyls	ND	0.0060	µg/Wipe	1		EPA 680 Modified	1/10/11	1/14/11 16:51	XC
Nonachlorobiphenyls	ND	0.0060	µg/Wipe	1		EPA 680 Modified	1/10/11	1/14/11 16:51	XC
Decachlorobiphenyl	ND	0.010	µg/Wipe	1		EPA 680 Modified	1/10/11	1/14/11 16:51	XC
Total Polychlorinated biphenyls	0.026		µg/Wipe	1		EPA 680 Modified	1/10/11	1/14/11 16:51	XC
Surrogates	% Recovery	Recovery Limits	Flag						
Tetrachloro-m-xylene	75.1	50-125							



39 Spruce Street * East Longmeadow, MA 01028 * FAX 413/525-6405 * TEL. 413/525-2332

Project Location: Hanover School-Meriden

Sample Description:

Work Order: 11A0153

Date Received: 1/7/2011

Field Sample #: 0106UA-03W

Sampled: 1/6/2011 16:02

Sample ID: 11A0153-02

Sample Matrix: Wipe

PCB Homologues by GC/MS (Wipe)

Analyte	Results	RL	Units	Dilution	Flag	Method	Date Prepared	Date/Time Analyzed	Analyst
Monochlorobiphenyls	ND	0.0020	µg/Wipe	1		EPA 680 Modified	1/10/11	1/14/11 17:30	XC
Dichlorobiphenyls	ND	0.0020	µg/Wipe	1		EPA 680 Modified	1/10/11	1/14/11 17:30	XC
Trichlorobiphenyls	ND	0.0020	µg/Wipe	1		EPA 680 Modified	1/10/11	1/14/11 17:30	XC
Tetrachlorobiphenyls	0.0059	0.0040	µg/Wipe	1		EPA 680 Modified	1/10/11	1/14/11 17:30	XC
Pentachlorobiphenyls	0.020	0.0040	µg/Wipe	1		EPA 680 Modified	1/10/11	1/14/11 17:30	XC
Hexachlorobiphenyls	0.0066	0.0040	µg/Wipe	1		EPA 680 Modified	1/10/11	1/14/11 17:30	XC
Heptachlorobiphenyls	ND	0.0060	µg/Wipe	1		EPA 680 Modified	1/10/11	1/14/11 17:30	XC
Octachlorobiphenyls	ND	0.0060	µg/Wipe	1		EPA 680 Modified	1/10/11	1/14/11 17:30	XC
Nonachlorobiphenyls	ND	0.0060	µg/Wipe	1		EPA 680 Modified	1/10/11	1/14/11 17:30	XC
Decachlorobiphenyl	ND	0.010	µg/Wipe	1		EPA 680 Modified	1/10/11	1/14/11 17:30	XC
Total Polychlorinated biphenyls	0.032		µg/Wipe	1		EPA 680 Modified	1/10/11	1/14/11 17:30	XC
Surrogates	% Recovery		Recovery Limits		Flag				
Tetrachloro-m-xylene	70.5		50-125						
								1/14/11 17:30	



39 Spruce Street * East Longmeadow, MA 01028 * FAX 413/525-6405 * TEL. 413/525-2332

Project Location: Hanover School-Meriden

Sample Description:

Work Order: 11A0153

Date Received: 1/7/2011

Field Sample #: 0106UA-04W

Sampled: 1/6/2011 16:05

Sample ID: 11A0153-03

Sample Matrix: Wipe

PCB Homologues by GC/MS (Wipe)

Analyte	Results	RL	Units	Dilution	Flag	Method	Date Prepared	Date/Time Analyzed	Analyst
Monochlorobiphenyls	ND	0.0020	µg/Wipe	1		EPA 680 Modified	1/10/11	1/14/11 18:09	XC
Dichlorobiphenyls	ND	0.0020	µg/Wipe	1		EPA 680 Modified	1/10/11	1/14/11 18:09	XC
Trichlorobiphenyls	ND	0.0020	µg/Wipe	1		EPA 680 Modified	1/10/11	1/14/11 18:09	XC
Tetrachlorobiphenyls	ND	0.0040	µg/Wipe	1		EPA 680 Modified	1/10/11	1/14/11 18:09	XC
Pentachlorobiphenyls	ND	0.0040	µg/Wipe	1		EPA 680 Modified	1/10/11	1/14/11 18:09	XC
Hexachlorobiphenyls	ND	0.0040	µg/Wipe	1		EPA 680 Modified	1/10/11	1/14/11 18:09	XC
Heptachlorobiphenyls	ND	0.0060	µg/Wipe	1		EPA 680 Modified	1/10/11	1/14/11 18:09	XC
Octachlorobiphenyls	ND	0.0060	µg/Wipe	1		EPA 680 Modified	1/10/11	1/14/11 18:09	XC
Nonachlorobiphenyls	ND	0.0060	µg/Wipe	1		EPA 680 Modified	1/10/11	1/14/11 18:09	XC
Decachlorobiphenyl	ND	0.010	µg/Wipe	1		EPA 680 Modified	1/10/11	1/14/11 18:09	XC
Total Polychlorinated biphenyls	0.0		µg/Wipe	1		EPA 680 Modified	1/10/11	1/14/11 18:09	XC
Surrogates	% Recovery		Recovery Limits		Flag				
Tetrachloro-m-xylene	68.7		50-125					1/14/11 18:09	



39 Spruce Street * East Longmeadow, MA 01028 * FAX 413/525-6405 * TEL. 413/525-2332

Project Location: Hanover School-Meriden

Sample Description:

Work Order: 11A0153

Date Received: 1/7/2011

Field Sample #: 0106UA-05W

Sampled: 1/6/2011 16:07

Sample ID: 11A0153-04

Sample Matrix: Wipe

PCB Homologues by GC/MS (Wipe)

Analyte	Results	RL	Units	Dilution	Flag	Method	Date Prepared	Date/Time Analyzed	Analyst
Monochlorobiphenyls	ND	0.0020	µg/Wipe	1		EPA 680 Modified	1/10/11	1/14/11 18:48	XC
Dichlorobiphenyls	ND	0.0020	µg/Wipe	1		EPA 680 Modified	1/10/11	1/14/11 18:48	XC
Trichlorobiphenyls	ND	0.0020	µg/Wipe	1		EPA 680 Modified	1/10/11	1/14/11 18:48	XC
Tetrachlorobiphenyls	ND	0.0040	µg/Wipe	1		EPA 680 Modified	1/10/11	1/14/11 18:48	XC
Pentachlorobiphenyls	ND	0.0040	µg/Wipe	1		EPA 680 Modified	1/10/11	1/14/11 18:48	XC
Hexachlorobiphenyls	ND	0.0040	µg/Wipe	1		EPA 680 Modified	1/10/11	1/14/11 18:48	XC
Heptachlorobiphenyls	ND	0.0060	µg/Wipe	1		EPA 680 Modified	1/10/11	1/14/11 18:48	XC
Octachlorobiphenyls	ND	0.0060	µg/Wipe	1		EPA 680 Modified	1/10/11	1/14/11 18:48	XC
Nonachlorobiphenyls	ND	0.0060	µg/Wipe	1		EPA 680 Modified	1/10/11	1/14/11 18:48	XC
Decachlorobiphenyl	ND	0.010	µg/Wipe	1		EPA 680 Modified	1/10/11	1/14/11 18:48	XC
Total Polychlorinated biphenyls	0.0		µg/Wipe	1		EPA 680 Modified	1/10/11	1/14/11 18:48	XC
Surrogates		% Recovery		Recovery Limits	Flag				
Tetrachloro-m-xylene		68.1		50-125				1/14/11 18:48	



39 Spruce Street * East Longmeadow, MA 01028 * FAX 413/525-6405 * TEL. 413/525-2332

Project Location: Hanover School-Meriden

Sample Description:

Work Order: 11A0153

Date Received: 1/7/2011

Field Sample #: 0106UA-06W

Sampled: 1/6/2011 16:12

Sample ID: 11A0153-05

Sample Matrix: Wipe

PCB Homologues by GC/MS (Wipe)

Analyte	Results	RL	Units	Dilution	Flag	Method	Date Prepared	Date/Time Analyzed	Analyst
Monochlorobiphenyls	ND	0.0020	µg/Wipe	1		EPA 680 Modified	1/10/11	1/14/11 19:27	XC
Dichlorobiphenyls	ND	0.0020	µg/Wipe	1		EPA 680 Modified	1/10/11	1/14/11 19:27	XC
Trichlorobiphenyls	ND	0.0020	µg/Wipe	1		EPA 680 Modified	1/10/11	1/14/11 19:27	XC
Tetrachlorobiphenyls	ND	0.0040	µg/Wipe	1		EPA 680 Modified	1/10/11	1/14/11 19:27	XC
Pentachlorobiphenyls	ND	0.0040	µg/Wipe	1		EPA 680 Modified	1/10/11	1/14/11 19:27	XC
Hexachlorobiphenyls	ND	0.0040	µg/Wipe	1		EPA 680 Modified	1/10/11	1/14/11 19:27	XC
Heptachlorobiphenyls	ND	0.0060	µg/Wipe	1		EPA 680 Modified	1/10/11	1/14/11 19:27	XC
Octachlorobiphenyls	ND	0.0060	µg/Wipe	1		EPA 680 Modified	1/10/11	1/14/11 19:27	XC
Nonachlorobiphenyls	ND	0.0060	µg/Wipe	1		EPA 680 Modified	1/10/11	1/14/11 19:27	XC
Decachlorobiphenyl	ND	0.010	µg/Wipe	1		EPA 680 Modified	1/10/11	1/14/11 19:27	XC
Total Polychlorinated biphenyls	0.0		µg/Wipe	1		EPA 680 Modified	1/10/11	1/14/11 19:27	XC
Surrogates		% Recovery		Recovery Limits		Flag			
Tetrachloro-m-xylene		71.6		50-125				1/14/11 19:27	



39 Spruce Street * East Longmeadow, MA 01028 * FAX 413/525-6405 * TEL. 413/525-2332

Project Location: Hanover School-Meriden

Sample Description:

Work Order: 11A0153

Date Received: 1/7/2011

Field Sample #: 0106UA-07W

Sampled: 1/6/2011 16:15

Sample ID: 11A0153-06

Sample Matrix: Wipe

PCB Homologues by GC/MS (Wipe)

Analyte	Results	RL	Units	Dilution	Flag	Method	Date	Date/Time	Analyst
							Prepared	Analyzed	
Monochlorobiphenyls	ND	0.0020	µg/Wipe	1		EPA 680 Modified	1/10/11	1/14/11 20:06	XC
Dichlorobiphenyls	ND	0.0020	µg/Wipe	1		EPA 680 Modified	1/10/11	1/14/11 20:06	XC
Trichlorobiphenyls	ND	0.0020	µg/Wipe	1		EPA 680 Modified	1/10/11	1/14/11 20:06	XC
Tetrachlorobiphenyls	ND	0.0040	µg/Wipe	1		EPA 680 Modified	1/10/11	1/14/11 20:06	XC
Pentachlorobiphenyls	ND	0.0040	µg/Wipe	1		EPA 680 Modified	1/10/11	1/14/11 20:06	XC
Hexachlorobiphenyls	ND	0.0040	µg/Wipe	1		EPA 680 Modified	1/10/11	1/14/11 20:06	XC
Heptachlorobiphenyls	ND	0.0060	µg/Wipe	1		EPA 680 Modified	1/10/11	1/14/11 20:06	XC
Octachlorobiphenyls	ND	0.0060	µg/Wipe	1		EPA 680 Modified	1/10/11	1/14/11 20:06	XC
Nonachlorobiphenyls	ND	0.0060	µg/Wipe	1		EPA 680 Modified	1/10/11	1/14/11 20:06	XC
Decachlorobiphenyl	ND	0.010	µg/Wipe	1		EPA 680 Modified	1/10/11	1/14/11 20:06	XC
Total Polychlorinated biphenyls	0.0		µg/Wipe	1		EPA 680 Modified	1/10/11	1/14/11 20:06	XC
Surrogates		% Recovery		Recovery Limits		Flag			
Tetrachloro-m-xylene		67.8		50-125				1/14/11 20:06	



39 Spruce Street * East Longmeadow, MA 01028 * FAX 413/525-6405 * TEL. 413/525-2332

Project Location: Hanover School-Meriden

Sample Description:

Work Order: 11A0153

Date Received: 1/7/2011

Field Sample #: 0106UA-08W

Sampled: 1/6/2011 16:18

Sample ID: 11A0153-07

Sample Matrix: Wipe

PCB Homologues by GC/MS (Wipe)

Analyte	Results	RL	Units	Dilution	Flag	Method	Date Prepared	Date/Time Analyzed	Analyst
Monochlorobiphenyls	ND	0.0020	µg/Wipe	1		EPA 680 Modified	1/10/11	1/14/11 20:45	XC
Dichlorobiphenyls	ND	0.0020	µg/Wipe	1		EPA 680 Modified	1/10/11	1/14/11 20:45	XC
Trichlorobiphenyls	ND	0.0020	µg/Wipe	1		EPA 680 Modified	1/10/11	1/14/11 20:45	XC
Tetrachlorobiphenyls	ND	0.0040	µg/Wipe	1		EPA 680 Modified	1/10/11	1/14/11 20:45	XC
Pentachlorobiphenyls	ND	0.0040	µg/Wipe	1		EPA 680 Modified	1/10/11	1/14/11 20:45	XC
Hexachlorobiphenyls	ND	0.0040	µg/Wipe	1		EPA 680 Modified	1/10/11	1/14/11 20:45	XC
Heptachlorobiphenyls	ND	0.0060	µg/Wipe	1		EPA 680 Modified	1/10/11	1/14/11 20:45	XC
Octachlorobiphenyls	ND	0.0060	µg/Wipe	1		EPA 680 Modified	1/10/11	1/14/11 20:45	XC
Nonachlorobiphenyls	ND	0.0060	µg/Wipe	1		EPA 680 Modified	1/10/11	1/14/11 20:45	XC
Decachlorobiphenyl	ND	0.010	µg/Wipe	1		EPA 680 Modified	1/10/11	1/14/11 20:45	XC
Total Polychlorinated biphenyls	0.0		µg/Wipe	1		EPA 680 Modified	1/10/11	1/14/11 20:45	XC
Surrogates	% Recovery		Recovery Limits		Flag				
Tetrachloro-m-xylene	79.5		50-125					1/14/11 20:45	



39 Spruce Street * East Longmeadow, MA 01028 * FAX 413/525-6405 * TEL. 413/525-2332

Project Location: Hanover School-Meriden

Sample Description:

Work Order: 11A0153

Date Received: 1/7/2011

Field Sample #: 0106UA-09W

Sampled: 1/6/2011 16:23

Sample ID: 11A0153-08

Sample Matrix: Wipe

PCB Homologues by GC/MS (Wipe)

Analyte	Results	RL	Units	Dilution	Flag	Method	Date Prepared	Date/Time Analyzed	Analyst
Monochlorobiphenyls	ND	0.0020	µg/Wipe	1		EPA 680 Modified	1/10/11	1/14/11 21:24	XC
Dichlorobiphenyls	ND	0.0020	µg/Wipe	1		EPA 680 Modified	1/10/11	1/14/11 21:24	XC
Trichlorobiphenyls	ND	0.0020	µg/Wipe	1		EPA 680 Modified	1/10/11	1/14/11 21:24	XC
Tetrachlorobiphenyls	ND	0.0040	µg/Wipe	1		EPA 680 Modified	1/10/11	1/14/11 21:24	XC
Pentachlorobiphenyls	0.011	0.0040	µg/Wipe	1		EPA 680 Modified	1/10/11	1/14/11 21:24	XC
Hexachlorobiphenyls	0.0044	0.0040	µg/Wipe	1		EPA 680 Modified	1/10/11	1/14/11 21:24	XC
Heptachlorobiphenyls	ND	0.0060	µg/Wipe	1		EPA 680 Modified	1/10/11	1/14/11 21:24	XC
Octachlorobiphenyls	ND	0.0060	µg/Wipe	1		EPA 680 Modified	1/10/11	1/14/11 21:24	XC
Nonachlorobiphenyls	ND	0.0060	µg/Wipe	1		EPA 680 Modified	1/10/11	1/14/11 21:24	XC
Decachlorobiphenyl	ND	0.010	µg/Wipe	1		EPA 680 Modified	1/10/11	1/14/11 21:24	XC
Total Polychlorinated biphenyls	0.015		µg/Wipe	1		EPA 680 Modified	1/10/11	1/14/11 21:24	XC
Surrogates		% Recovery		Recovery Limits		Flag			
Tetrachloro-m-xylene		79.2		50-125				1/14/11 21:24	



39 Spruce Street * East Longmeadow, MA 01028 * FAX 413/525-6405 * TEL. 413/525-2332

Project Location: Hanover School-Meriden

Sample Description:

Work Order: 11A0153

Date Received: 1/7/2011

Field Sample #: 0106UA-10W

Sampled: 1/6/2011 16:26

Sample ID: 11A0153-09

Sample Matrix: Wipe

PCB Homologues by GC/MS (Wipe)

Analyte	Results	RL	Units	Dilution	Flag	Method	Date	Date/Time	Analyst
							Prepared	Analyzed	
Monochlorobiphenyls	ND	0.0020	µg/Wipe	1		EPA 680 Modified	1/10/11	1/14/11 22:03	XC
Dichlorobiphenyls	ND	0.0020	µg/Wipe	1		EPA 680 Modified	1/10/11	1/14/11 22:03	XC
Trichlorobiphenyls	ND	0.0020	µg/Wipe	1		EPA 680 Modified	1/10/11	1/14/11 22:03	XC
Tetrachlorobiphenyls	ND	0.0040	µg/Wipe	1		EPA 680 Modified	1/10/11	1/14/11 22:03	XC
Pentachlorobiphenyls	ND	0.0040	µg/Wipe	1		EPA 680 Modified	1/10/11	1/14/11 22:03	XC
Hexachlorobiphenyls	ND	0.0040	µg/Wipe	1		EPA 680 Modified	1/10/11	1/14/11 22:03	XC
Heptachlorobiphenyls	ND	0.0060	µg/Wipe	1		EPA 680 Modified	1/10/11	1/14/11 22:03	XC
Octachlorobiphenyls	ND	0.0060	µg/Wipe	1		EPA 680 Modified	1/10/11	1/14/11 22:03	XC
Nonachlorobiphenyls	ND	0.0060	µg/Wipe	1		EPA 680 Modified	1/10/11	1/14/11 22:03	XC
Decachlorobiphenyl	ND	0.010	µg/Wipe	1		EPA 680 Modified	1/10/11	1/14/11 22:03	XC
Total Polychlorinated biphenyls	0.0		µg/Wipe	1		EPA 680 Modified	1/10/11	1/14/11 22:03	XC
Surrogates	% Recovery		Recovery Limits		Flag				
Tetrachloro-m-xylene	76.2		50-125					1/14/11 22:03	



39 Spruce Street * East Longmeadow, MA 01028 * FAX 413/525-6405 * TEL. 413/525-2332

Sample Extraction Data

Prep Method: SW-846 3540C-EPA 680 Modified

Lab Number [Field ID]	Batch	Initial [Wipe]	Final [mL]	Date
11A0153-01 [0106UA-02W]	B024706	1.00	1.00	01/10/11
11A0153-02 [0106UA-03W]	B024706	1.00	1.00	01/10/11
11A0153-03 [0106UA-04W]	B024706	1.00	1.00	01/10/11
11A0153-04 [0106UA-05W]	B024706	1.00	1.00	01/10/11
11A0153-05 [0106UA-06W]	B024706	1.00	1.00	01/10/11
11A0153-06 [0106UA-07W]	B024706	1.00	1.00	01/10/11
11A0153-07 [0106UA-08W]	B024706	1.00	1.00	01/10/11
11A0153-08 [0106UA-09W]	B024706	1.00	1.00	01/10/11
11A0153-09 [0106UA-10W]	B024706	1.00	1.00	01/10/11



39 Spruce Street * East Longmeadow, MA 01028 * FAX 413/525-6405 * TEL. 413/525-2332

QUALITY CONTROL

PCB Homologues by GC/MS (Wipe) - Quality Control

Analyte	Result	Reporting Limit	Units	Spike Level	Source Result	%REC	%REC Limits	RPD	RPD Limit	Notes
Batch B024706 - SW-846 3540C										
Blank (B024706-BL.K1)										
Prepared: 01/10/11 Analyzed: 01/14/11										
Monochlorobiphenyls	ND	0.0020	µg/Wipe							
Dichlorobiphenyls	ND	0.0020	µg/Wipe							
Trichlorobiphenyls	ND	0.0020	µg/Wipe							
Tetrachlorobiphenyls	ND	0.0040	µg/Wipe							
Pentachlorobiphenyls	ND	0.0040	µg/Wipe							
Hexachlorobiphenyls	ND	0.0040	µg/Wipe							
Heptachlorobiphenyls	ND	0.0060	µg/Wipe							
Octachlorobiphenyls	ND	0.0060	µg/Wipe							
Nonachlorobiphenyls	ND	0.0060	µg/Wipe							
Decachlorobiphenyl	ND	0.010	µg/Wipe							
Total Polychlorinated biphenyls	0.0		µg/Wipe							
Surrogate: Tetrachloro-m-xylene	0.110		µg/Wipe	0.200		55.0	50-125			
LCS (B024706-BS1)										
Prepared: 01/10/11 Analyzed: 01/14/11										
Monochlorobiphenyls	0.12	0.0020	µg/Wipe	0.200		59.1	40-140			
Dichlorobiphenyls	0.11	0.0020	µg/Wipe	0.200		56.9	40-140			
Trichlorobiphenyls	0.12	0.0020	µg/Wipe	0.200		62.2	40-140			
Tetrachlorobiphenyls	0.26	0.0040	µg/Wipe	0.400		64.1	40-140			
Pentachlorobiphenyls	0.28	0.0040	µg/Wipe	0.400		71.0	40-140			
Hexachlorobiphenyls	0.27	0.0040	µg/Wipe	0.400		66.9	40-140			
Heptachlorobiphenyls	0.41	0.0060	µg/Wipe	0.600		68.2	40-140			
Octachlorobiphenyls	0.42	0.0060	µg/Wipe	0.600		69.7	40-140			
Nonachlorobiphenyls	0.18	0.0060	µg/Wipe	0.200		90.0	40-140			
Decachlorobiphenyl	0.63	0.010	µg/Wipe	1.00		63.4	40-140			
Surrogate: Tetrachloro-m-xylene	0.125		µg/Wipe	0.200		62.4	50-125			
LCS Dup (B024706-BSD1)										
Prepared: 01/10/11 Analyzed: 01/14/11										
Monochlorobiphenyls	0.11	0.0020	µg/Wipe	0.200		56.6	40-140	4.41		
Dichlorobiphenyls	0.11	0.0020	µg/Wipe	0.200		55.6	40-140	2.25		
Trichlorobiphenyls	0.12	0.0020	µg/Wipe	0.200		61.5	40-140	0.994		
Tetrachlorobiphenyls	0.25	0.0040	µg/Wipe	0.400		63.1	40-140	1.51		
Pentachlorobiphenyls	0.28	0.0040	µg/Wipe	0.400		70.5	40-140	0.664		
Hexachlorobiphenyls	0.27	0.0040	µg/Wipe	0.400		66.6	40-140	0.472		
Heptachlorobiphenyls	0.41	0.0060	µg/Wipe	0.600		67.7	40-140	0.660		
Octachlorobiphenyls	0.42	0.0060	µg/Wipe	0.600		69.4	40-140	0.331		
Nonachlorobiphenyls	0.18	0.0060	µg/Wipe	0.200		89.2	40-140	0.865		
Decachlorobiphenyl	0.63	0.010	µg/Wipe	1.00		62.6	40-140	1.39		
Surrogate: Tetrachloro-m-xylene	0.120		µg/Wipe	0.200		60.1	50-125			

FLAG/QUALIFIER SUMMARY

- * QC result is outside of established limits.
- † Wide recovery limits established for difficult compound.
- ‡ Wide RPD limits established for difficult compound.
- # Data exceeded client recommended or regulatory level

Percent recoveries and relative percent differences (RPDs) are determined by the software using values in the calculation which have not been rounded.



39 Spruce Street * East Longmeadow, MA 01028 * FAX 413/525-6405 * TEL. 413/525-2332

CERTIFICATIONS

Certified Analyses included in this Report

Analyte

Certifications

No certified Analyses included in this Report

The CON-TEST Environmental Laboratory operates under the following certifications and accreditations:

Code	Description	Number	Expires
AIHA	American Industrial Hygiene Association	100033	01/1/2012
MA	Massachusetts DEP	M-MA100	06/30/2011
CT	Connecticut Department of Public Health	PH-0567	09/30/2011
NY	New York State Department of Health	10899 NELAP	04/1/2011
NH	New Hampshire Environmental Lab	2516 NELAP	02/5/2011
RI	Rhode Island Department of Health	LAO00112	12/30/2011
NC	North Carolina Div. of Water Quality	652	12/31/2011
NJ	New Jersey DEP	MA007 NELAP	06/30/2011
FL	Florida Department of Health	E871027 NELAP	06/30/2011
VT	Vermont Department of Health Lead Laboratory	LL015036	07/30/2011
WA	State of Washington Department of Ecology	C2065	02/23/2011



FUSS & O'NEILL
Disciplines to Deliver

861-646-2469 • www.fandoc.com

11A0153

- 146 Hartford Road, Meriden, CT 06040
- 56 Quarry Road, Trumbull, CT 06611
- 1419 Richard Street, Columbia, SC 29201
- 78 Interstate Drive, West Springfield, MA 01089

- 50 Redfield Street, Suite 100, Boston, MA 02122
- 275 Providence Street, Suite 350, Providence, RI 02901
- 80 Washington Street, Suite 301, Prologis/epac, NY 11

CHAIN-OF-CUSTODY RECORD 22615

PROJECT NAME

PROJECT LOCATION

PROJECT NUMBER

Turnaround
 1 Day
 2 Days
 3 Days
 5 Days
 7 Days
 10 Days
 Other _____ (days)
 *Surcharge Applies

REPORT TO: Karron Redfield, Hanover School - Meriden, CT

INVOICE TO: Hanover School - Meriden, CT

LABORATORY: 20681473. AIE
 Con-Test

P.O. No.:

Analysis Request

Containers

Sampler's Signature: Ulem August

Date: 1-6-10

Source Codes:
 MW = Monitoring Well
 SW = Surface Water
 T = Treatment Facility
 S = Soil
 B = Sediment
 W = Waste
 A = Air

Other: Wipes

Item No.	Transfer Check	Sample Number	Source Code	Date Sampled	Time Sampled	Analysis Request	Soil VOA Vial ()	Glass Soil Container ()	Water VOA Vial ()	Glass Amber ()	Plastic As is ()	Plastic - H ₂ SO ₄ ()	Plastic - HNO ₃ ()	Plastic - NaOH ()	Comments
1		02W	Rm. 25	Floor	X	1-6-10	15:57	✓							-01
2		03W	Rm. 29	Floor		16:02	✓								-02
3		04W	Kitchen	Food prep		16:05	✓								-03
4		05W	Cafeteria	table		16:07	✓								-04
		06W	Rm. 18	desk		16:12	✓								-05
		07W	Health Sp	still		16:15	✓								-06
		08W	Rm. 17	Floor		16:18	✓								-07
		09W	Rm. 10	Floor		16:23	✓								-08
		10W	Rm. 1	Desk		16:26	✓								-09

PCBs Soxhlet Homologue

Relinquished By: Ulem August

Accepted By: [Signature]

Reporting and Detection Limit Requirements:

Transfer Number	Date	Time
1	1/6/10	09:12
2	1/7/10	10:30
3	1/7/10	14:45



Sample Receipt Checklist

CLIENT NAME: Fuss & O'Neill RECEIVED BY: CJS DATE: 1/7/11

1) Was the chain(s) of custody relinquished and signed? Yes No

2) Does the chain agree with the samples? Yes No
If not, explain:

3) Are all the samples in good condition? Yes No
If not, explain:

4) How were the samples received:

On Ice Direct from Sampling Ambient In Cooler(s)

Were the samples received in Temperature Compliance of (2-6°C)? Yes No N/A

Temperature °C by Temp blank _____ Temperature °C by Temp gun 6.0°C

5) Are there Dissolved samples for the lab to filter? Yes No
Who was notified _____ Date _____ Time _____

6) Are there any samples "On Hold"? Yes No Stored where:

7) Are there any RUSH or SHORT HOLDING TIME samples? Yes No
Who was notified _____ Date _____ Time _____

8) Location where samples are stored:

Permission to subcontract samples? Yes No
(Walk-in clients only) if not already approved
Client Signature: _____

Containers received at Con-Test

		# of containers			# of containers
1 Liter Amber			8 oz amber/clear jar		
500 mL Amber			4 oz amber/clear jar		9
250 mL Amber (8oz amber)			2 oz amber/clear jar		
1 Liter Plastic			Other glass jar		
500 mL Plastic			Plastic Bag / Ziploc		
250 mL plastic			Air Cassette		
40 mL Vial - type listed below			SOC Kit		
Colisure / bacteria bottle			Tubes		
Dissolved Oxygen bottle			Non-ConTest Container		
Flashpoint bottle			Other		
Encore			PM 2.5 / PM 10		
Perchlorate Kit			PUF Cartridge		

Laboratory Comments:

40 mL vials: # HCl _____ # Methanol _____
Bisulfate _____ # DI Water _____
Thiosulfate _____ Unpreserved _____

Time and Date Frozen: _____

Do all samples have the proper Acid pH: Yes No N/A

Do all samples have the proper Base pH: Yes No N/A



39 Spruce Street * East Longmeadow, MA 01028 * FAX 413/525-6405 * TEL. 413/525-2332

January 25, 2011

Kevin Miller
Fuss & O'Neill EnviroScience, LLC - CT
146 Hartford Road
Manchester, CT 06040

Project Location: Hanover School-Meriden
Client Job Number:
Project Number: 20081473.A1E
Laboratory Work Order Number: 11A0172

Enclosed are results of analyses for samples received by the laboratory on January 7, 2011. If you have any questions concerning this report, please feel free to contact me.

Sincerely,

A handwritten signature in black ink that reads "Holly L. Folsom". The signature is written in a cursive, flowing style.

Holly L. Folsom
Project Manager



39 Spruce Street * East Longmeadow, MA 01028 * FAX 413/525-6405 * TEL. 413/525-2332

Fuss & O'Neill EnviroScience, LLC - CT
146 Hartford Road
Manchester, CT 06040
ATTN: Kevin Miller

REPORT DATE: 1/25/2011

PURCHASE ORDER NUMBER:

PROJECT NUMBER: 20081473.A1E

ANALYTICAL SUMMARY

WORK ORDER NUMBER: 11A0172

The results of analyses performed on the following samples submitted to the CON-TEST Analytical Laboratory are found in this report.

PROJECT LOCATION: Hanover School-Meriden

FIELD SAMPLE #	LAB ID:	MATRIX	SAMPLE DESCRIPTION	TEST	SUB LAB
0106UA-01W	11A0172-01	Wipe		EPA 680 Modified	
0106UA-11W	11A0172-02	Wipe		EPA 680 Modified	



39 Spruce Street * East Longmeadow, MA 01028 * FAX 413/525-6405 * TEL. 413/525-2332

CASE NARRATIVE SUMMARY

All reported results are within defined laboratory quality control objectives unless listed below or otherwise qualified in this report.

The results of analyses reported only relate to samples submitted to the Con-Test Analytical Laboratory for testing. I certify that the analyses listed above, unless specifically listed as subcontracted, if any, were performed under my direction according to the approved methodologies listed in this document, and that based upon my inquiry of those individuals immediately responsible for obtaining the information, the material contained in this report is, to the best of my knowledge and belief, accurate and complete.

A handwritten signature in black ink, appearing to read "M. Erickson", is written in a cursive style.

Michael A. Erickson
Laboratory Director



39 Spruce Street * East Longmeadow, MA 01028 * FAX 413/525-6405 * TEL. 413/525-2332

Project Location: Hanover School-Meriden

Sample Description:

Work Order: 11A0172

Date Received: 1/7/2011

Field Sample #: 0106UA-01W

Sampled: 1/6/2011 15:50

Sample ID: 11A0172-01

Sample Matrix: Wipe

PCB Homologues by GC/MS (Wipe)

Analyte	Results	RL	Units	Dilution	Flag	Method	Date Prepared	Date/Time Analyzed	Analyst
Monochlorobiphenyls	ND	0.0020	µg/Wipe	1		EPA 680 Modified	1/10/11	1/14/11 22:42	XC
Dichlorobiphenyls	ND	0.0020	µg/Wipe	1		EPA 680 Modified	1/10/11	1/14/11 22:42	XC
Trichlorobiphenyls	ND	0.0020	µg/Wipe	1		EPA 680 Modified	1/10/11	1/14/11 22:42	XC
Tetrachlorobiphenyls	ND	0.0040	µg/Wipe	1		EPA 680 Modified	1/10/11	1/14/11 22:42	XC
Pentachlorobiphenyls	0.0049	0.0040	µg/Wipe	1		EPA 680 Modified	1/10/11	1/14/11 22:42	XC
Hexachlorobiphenyls	ND	0.0040	µg/Wipe	1		EPA 680 Modified	1/10/11	1/14/11 22:42	XC
Heptachlorobiphenyls	ND	0.0060	µg/Wipe	1		EPA 680 Modified	1/10/11	1/14/11 22:42	XC
Octachlorobiphenyls	ND	0.0060	µg/Wipe	1		EPA 680 Modified	1/10/11	1/14/11 22:42	XC
Nonachlorobiphenyls	ND	0.0060	µg/Wipe	1		EPA 680 Modified	1/10/11	1/14/11 22:42	XC
Decachlorobiphenyl	ND	0.010	µg/Wipe	1		EPA 680 Modified	1/10/11	1/14/11 22:42	XC
Total Polychlorinated biphenyls	0.0049		µg/Wipe	1		EPA 680 Modified	1/10/11	1/14/11 22:42	XC
Surrogates		% Recovery	Recovery Limits		Flag				
Tetrachloro-m-xylene		77.2	50-125					1/14/11 22:42	



39 Spruce Street * East Longmeadow, MA 01028 * FAX 413/525-6405 * TEL. 413/525-2332

Project Location: Hanover School-Meriden

Sample Description:

Work Order: 11A0172

Date Received: 1/7/2011

Field Sample #: 0106UA-11W

Sampled: 1/6/2011 21:20

Sample ID: 11A0172-02

Sample Matrix: Wipe

PCB Homologues by GC/MS (Wipe)

Analyte	Results	RL	Units	Dilution	Flag	Method	Date Prepared	Date/Time Analyzed	Analyst
Monochlorobiphenyls	ND	0.0020	µg/Wipe	1		EPA 680 Modified	1/10/11	1/14/11 23:21	XC
Dichlorobiphenyls	ND	0.0020	µg/Wipe	1		EPA 680 Modified	1/10/11	1/14/11 23:21	XC
Trichlorobiphenyls	ND	0.0020	µg/Wipe	1		EPA 680 Modified	1/10/11	1/14/11 23:21	XC
Tetrachlorobiphenyls	ND	0.0040	µg/Wipe	1		EPA 680 Modified	1/10/11	1/14/11 23:21	XC
Pentachlorobiphenyls	ND	0.0040	µg/Wipe	1		EPA 680 Modified	1/10/11	1/14/11 23:21	XC
Hexachlorobiphenyls	ND	0.0040	µg/Wipe	1		EPA 680 Modified	1/10/11	1/14/11 23:21	XC
Heptachlorobiphenyls	ND	0.0060	µg/Wipe	1		EPA 680 Modified	1/10/11	1/14/11 23:21	XC
Octachlorobiphenyls	ND	0.0060	µg/Wipe	1		EPA 680 Modified	1/10/11	1/14/11 23:21	XC
Nonachlorobiphenyls	ND	0.0060	µg/Wipe	1		EPA 680 Modified	1/10/11	1/14/11 23:21	XC
Decachlorobiphenyl	ND	0.010	µg/Wipe	1		EPA 680 Modified	1/10/11	1/14/11 23:21	XC
Total Polychlorinated biphenyls	0.0		µg/Wipe	1		EPA 680 Modified	1/10/11	1/14/11 23:21	XC
Surrogates	% Recovery		Recovery Limits		Flag				
Tetrachloro-m-xylene	72.4		50-125					1/14/11 23:21	



39 Spruce Street * East Longmeadow, MA 01028 * FAX 413/525-6405 * TEL. 413/525-2332

Sample Extraction Data

Prep Method: SW-846 3540C-EPA 680 Modified

Lab Number [Field ID]	Batch	Initial [Wipe]	Final [mL]	Date
11A0172-01 [0106UA-01W]	B024706	1.00	1.00	01/10/11
11A0172-02 [0106UA-11W]	B024706	1.00	1.00	01/10/11



39 Spruce Street * East Longmeadow, MA 01028 * FAX 413/525-6405 * TEL. 413/525-2332

QUALITY CONTROL

PCB Homologues by GC/MS (Wipe) - Quality Control

Analyte	Result	Reporting Limit	Units	Spike Level	Source Result	%REC	%REC Limits	RPD	RPD Limit	Notes
Batch B024706 - SW-846 3540C										
Blank (B024706-BLK1)										
					Prepared: 01/10/11 Analyzed: 01/14/11					
Monochlorobiphenyls	ND	0.0020	µg/Wipe							
Dichlorobiphenyls	ND	0.0020	µg/Wipe							
Trichlorobiphenyls	ND	0.0020	µg/Wipe							
Tetrachlorobiphenyls	ND	0.0040	µg/Wipe							
Pentachlorobiphenyls	ND	0.0040	µg/Wipe							
Hexachlorobiphenyls	ND	0.0040	µg/Wipe							
Heptachlorobiphenyls	ND	0.0060	µg/Wipe							
Octachlorobiphenyls	ND	0.0060	µg/Wipe							
Nonachlorobiphenyls	ND	0.0060	µg/Wipe							
Decachlorobiphenyl	ND	0.010	µg/Wipe							
Total Polychlorinated biphenyls	0.0		µg/Wipe							
Surrogate: Tetrachloro-m-xylene	0.110		µg/Wipe	0.200		55.0	50-125			
LCS (B024706-BS1)										
					Prepared: 01/10/11 Analyzed: 01/14/11					
Monochlorobiphenyls	0.12	0.0020	µg/Wipe	0.200		59.1	40-140			
Dichlorobiphenyls	0.11	0.0020	µg/Wipe	0.200		56.9	40-140			
Trichlorobiphenyls	0.12	0.0020	µg/Wipe	0.200		62.2	40-140			
Tetrachlorobiphenyls	0.26	0.0040	µg/Wipe	0.400		64.1	40-140			
Pentachlorobiphenyls	0.28	0.0040	µg/Wipe	0.400		71.0	40-140			
Hexachlorobiphenyls	0.27	0.0040	µg/Wipe	0.400		66.9	40-140			
Heptachlorobiphenyls	0.41	0.0060	µg/Wipe	0.600		68.2	40-140			
Octachlorobiphenyls	0.42	0.0060	µg/Wipe	0.600		69.7	40-140			
Nonachlorobiphenyls	0.18	0.0060	µg/Wipe	0.200		90.0	40-140			
Decachlorobiphenyl	0.63	0.010	µg/Wipe	1.00		63.4	40-140			
Surrogate: Tetrachloro-m-xylene	0.125		µg/Wipe	0.200		62.4	50-125			
LCS Dup (B024706-BSD1)										
					Prepared: 01/10/11 Analyzed: 01/14/11					
Monochlorobiphenyls	0.11	0.0020	µg/Wipe	0.200		56.6	40-140	4.41		
Dichlorobiphenyls	0.11	0.0020	µg/Wipe	0.200		55.6	40-140	2.25		
Trichlorobiphenyls	0.12	0.0020	µg/Wipe	0.200		61.5	40-140	0.994		
Tetrachlorobiphenyls	0.25	0.0040	µg/Wipe	0.400		63.1	40-140	1.51		
Pentachlorobiphenyls	0.28	0.0040	µg/Wipe	0.400		70.5	40-140	0.664		
Hexachlorobiphenyls	0.27	0.0040	µg/Wipe	0.400		66.6	40-140	0.472		
Heptachlorobiphenyls	0.41	0.0060	µg/Wipe	0.600		67.7	40-140	0.660		
Octachlorobiphenyls	0.42	0.0060	µg/Wipe	0.600		69.4	40-140	0.331		
Nonachlorobiphenyls	0.18	0.0060	µg/Wipe	0.200		89.2	40-140	0.865		
Decachlorobiphenyl	0.63	0.010	µg/Wipe	1.00		62.6	40-140	1.39		
Surrogate: Tetrachloro-m-xylene	0.120		µg/Wipe	0.200		60.1	50-125			



39 Spruce Street * East Longmeadow, MA 01028 * FAX 413/525-6405 * TEL. 413/525-2332

FLAG/QUALIFIER SUMMARY

- * QC result is outside of established limits.
- † Wide recovery limits established for difficult compound.
- ‡ Wide RPD limits established for difficult compound.
- # Data exceeded client recommended or regulatory level

Percent recoveries and relative percent differences (RPDs) are determined by the software using values in the calculation which have not been rounded.



39 Spruce Street * East Longmeadow, MA 01028 * FAX 413/525-6405 * TEL. 413/525-2332

CERTIFICATIONS

Certified Analyses included in this Report

Analyte

Certifications

No certified Analyses included in this Report

The CON-TEST Environmental Laboratory operates under the following certifications and accreditations:

Code	Description	Number	Expires
AIHA	American Industrial Hygiene Association	100033	01/1/2012
MA	Massachusetts DEP	M-MA100	06/30/2011
CT	Connecticut Department of Public Health	PH-0567	09/30/2011
NY	New York State Department of Health	10899 NELAP	04/1/2011
NH	New Hampshire Environmental Lab	2516 NELAP	02/5/2011
RI	Rhode Island Department of Health	LAO00112	12/30/2011
NC	North Carolina Div. of Water Quality	652	12/31/2011
NJ	New Jersey DEP	MA007 NELAP	06/30/2011
FL	Florida Department of Health	E871027 NELAP	06/30/2011
VT	Vermont Department of Health Lead Laboratory	LL015036	07/30/2011
WA	State of Washington Department of Ecology	C2065	02/23/2011



FUSS & O'NEILL

Disciplines to Deliver

(860) 646-2469 • www.fodn.com

11A0172
HA0156

- 146 Hartford Road, Manchester, CT 06040
- 56 Quarry Road, Trumbull, CT 06611
- 1419 Richland Street, Columbia, SC 29201
- 78 Interstate Drive, West Springfield, MA 01089

- 50 Redfield Street, Suite 100, Boston, MA 02122
- 275 Promenade Street, Suite 350, Providence, RI 02908
- 80 Washington Street, Suite 301, Poughkeepsie, NY 12601

CHAIN-OF-CUSTODY RECORD 22616

PROJECT NAME

PROJECT LOCATION

PROJECT NUMBER

REPORT TO: Karren Redfield, Kevin Miller

Hammer School - Menden, CT 20081473.AIE

LABORATORY
CON-TEST

INVOICE TO:

Analysis Request

P.O. No.:

Sampler's Signature: *Kevin Miller* Date: 1/6/11

Source Codes: MW=Monitoring Well PW=Portable Water S=Soil
 SW=Surface Water T=Treatment Facility B=Sediment
 X=Other Wipes

W=Waste
A=Air

Item No.	Transfer Check	Sample Number	Source Code	Date Sampled	Time Sampled	Analysis Request	Containers
01		01A, Rm. 2A	A	1-6-10	15:55	<input checked="" type="checkbox"/>	PCBs Soxhlet Homologue
01		01W, Rm. 2A, sill	W	1-6-10	15:50	<input checked="" type="checkbox"/>	
02		02W, Rm. 2A, sill	W	1-6-10	21:20	<input checked="" type="checkbox"/>	
<p>Wipe Samples reported on 11A0172 work order 11A0172</p>							

Step Comments Lpm Volume
1957 4.2 10/6/11

Transfer Number	Relinquished By	Accepted By	Date	Time	Reporting and Detection Limit Requirements	Additional Comments
1	<i>Kevin Miller</i>	<i>Kevin Miller</i>	1/6/11	22:25		
2	<i>Kevin Miller</i>	<i>Kevin Miller</i>	1/11/11	18:35		
3	<i>Kevin Miller</i>	<i>Kevin Miller</i>	1/7/11	14:47		



Sample Receipt Checklist

CLIENT NAME: Fuss & O'Neill RECEIVED BY: CVB DATE: 1/7/11

1) Was the chain(s) of custody relinquished and signed? Yes No

2) Does the chain agree with the samples? Yes No
If not, explain:

3) Are all the samples in good condition? Yes No
If not, explain:

4) How were the samples received:

On Ice Direct from Sampling Ambient In Cooler(s)

Were the samples received in Temperature Compliance of (2-6°C)? Yes No N/A

Temperature °C by Temp blank _____ Temperature °C by Temp gun 6.0°C

5) Are there Dissolved samples for the lab to filter? Yes No
Who was notified _____ Date _____ Time _____

6) Are there any samples "On Hold"? Yes No Stored where:

7) Are there any RUSH or SHORT HOLDING TIME samples? Yes No
Who was notified _____ Date _____ Time _____

8) Location where samples are stored:

Permission to subcontract samples? Yes No
(Walk-in clients only) if not already approved
Client Signature: _____

Containers received at Con-Test

		# of containers			# of containers
1 Liter Amber			8 oz amber/clear jar		
500 mL Amber			4 oz amber/clear jar		2
250 mL Amber (8oz amber)			2 oz amber/clear jar		
1 Liter Plastic			Other glass jar		
500 mL Plastic			Plastic Bag / Ziploc		
250 mL plastic			Air Cassette		
40 mL Vial - type listed below			SOC Kit		
Colisure / bacteria bottle			Tubes		
Dissolved Oxygen bottle			Non-ConTest Container		
Flashpoint bottle			Other		
Encore			PM 2.5 / PM 10		
Perchlorate Kit			PUF Cartridge		1

Laboratory Comments:

40 mL vials: # HCl _____ # Methanol _____
Bisulfate _____ # DI Water _____
Thiosulfate _____ Unpreserved _____

Time and Date Frozen: _____

Do all samples have the proper Acid pH: Yes No N/A

Do all samples have the proper Base pH: Yes No N/A